



FireFox Gold Corp.
Management Discussion and Analysis
For the nine months ended September 30, 2023
(Expressed in Canadian dollars)

MANAGEMENT DISCUSSION AND ANALYSIS
NINE MONTHS ENDED SEPTEMBER 30, 2023

INTRODUCTION

The Management Discussion & Analysis has been prepared by management and reviewed and approved by the Board of Directors on November 29, 2023. The following discussion of performance, financial condition and future prospects should be read in conjunction with the unaudited interim condensed financial statements and the related notes thereto for the nine months ended September 30, 2023, and the audited annual consolidated financial statements and the related notes thereto for the year ended December 31, 2022. The information provided herein supplements but does not form part of the financial statements. This discussion covers the period ended September 30, 2023 and the subsequent period up to November 29, 2023, the date of issue of this MD&A. Monetary amounts in the following discussion are in Canadian dollars unless otherwise noted.

Additional information regarding the Company can be found on the Company's page at www.sedar.com.

The technical information presented herein has been reviewed by Patrick Highsmith, MSc, CPG, a member of the American Institute of Professional Geologists, a director of the Company, and a qualified person as defined by National Instrument 43-101.

This MD&A contains Forward Looking Information.
Please read the Cautionary Statements on page 3 carefully.

FIREFOX GOLD CORP.

Management Discussion and Analysis

September 30, 2023

FORWARD LOOKING STATEMENTS

This MD&A contains certain forward-looking statements or forward-looking information within the meaning of applicable Canadian securities laws. All statements and information, other than statements of historical fact, included in or incorporated by reference into this MD&A are forward-looking statements and forward-looking information, including, without limitation, statements regarding activities, events or developments that we expect or anticipate may occur in the future. Such forward-looking statements and information can be identified by the use of forward-looking words such as "will", "expect", "intend", "plan", "estimate", "anticipate", "believe" or "continue" or similar words and expressions or the negative thereof. There can be no assurance that the plans, intentions or expectations upon which such forward-looking statements and information are based will occur or, even if they do occur, will result in the performance, events or results expected.

The forward-looking statements and forward-looking information reflect the current beliefs of the Company and are based on currently available information. Accordingly, these statements are subject to known and unknown risks, uncertainties and other factors which could cause the actual results, performance or achievements of the Company to be materially different from any future results, performance or achievements expressed in or implied by the forward-looking statements. This forward-looking information includes estimates, forecasts, plans, priorities, strategies and statements as to the Company's current expectations and assumptions concerning, among other things, ability to access sufficient funds to carry on operations, compliance with current or future regulatory regimes, particularly in the case of ambiguities, financial and operational performance and prospects, collection of receivables, anticipated conclusions of negotiations to acquire projects or investments, our ability to attract and retain skilled staff and consultants, expectations of market prices and costs, expansion plans and objectives, requirements for additional capital, the availability of financing, and the future development and costs and outcomes of the Company's projects or investments. The foregoing list of assumptions is not exhaustive. Events or circumstances could cause actual results to vary materially.

We caution readers of this MD&A not to place undue reliance on forward-looking statements and information contained herein, which are not a guarantee of performance, events or results and are subject to a number of risks, uncertainties and other factors that could cause actual performance, events or results to differ materially from those expressed or implied by such forward-looking statements and information. These factors include: unanticipated future operational difficulties (including cost escalation, unavailability of materials and equipment, industrial disturbances or other job action and unanticipated events related to health, safety and environmental matters); social unrest; failure of counterparties to perform their contractual obligations; changes in priorities, plans, strategies and prospects; general economic, industry, business and market conditions; disruptions or changes in the credit or securities markets; changes in law, regulation, or application and interpretation of the same; the ability to implement business plans and strategies, and to pursue business opportunities; rulings by courts or arbitrators, proceedings and investigations; inflationary pressures; and various other events, conditions or circumstances that could disrupt the Company's priorities, plans, strategies and prospects including those detailed from time to time in the Company's reports and public filings with the Canadian securities administrators, filed on [SEDAR](#).

This information speaks only as of the date of this MD&A. The Company undertakes no obligation to revise or update forward-looking information after the date of this document, nor to make revisions to reflect the occurrence of future unanticipated events, except as may be required under applicable securities laws or the policies of the TSX-V exchange.

FIREFOX GOLD CORP.

Management Discussion and Analysis

September 30, 2023

THE COMPANY

The principal business of FireFox Gold Corp. (“FireFox” or “the Company”) is the exploration and development of mineral properties in Finland. The Company owns several exploration-stage properties in the country, further described in the following pages.

FireFox was incorporated in the Province of British Columbia on June 16, 2017, under the name Silverstone Resources Corp. The Company’s name was changed to FireFox Gold Corp. on August 23, 2017. The Company is a reporting issuer in British Columbia and Alberta. The Company’s shares were listed on the TSX Venture Exchange in December 2018 and trade under the symbol FFOX. FireFox is also listed on the OTCQB exchange in the United States under the symbol FFOXF, as well as on the Frankfurt Stock Exchange under the symbol FIY.

Plan of arrangement

The Company was a wholly owned subsidiary of Anacott Resources Corp. (“Anacott”) until a plan of arrangement was completed on July 28, 2017 under which the Company’s common shares were distributed to shareholders of Anacott on a pro-rata basis.

Recent share issuance activities

On April 28, 2021, FireFox completed an oversubscribed non-brokered private placement raising total gross proceeds of approximately \$3,000,000 by issuing 16,666,664 units at a purchase price of \$0.18 per unit. Each unit consisted of one common share of the Company and one half of one common share purchase warrant, with each whole warrant being exercisable to acquire one additional common share of the Company at an exercise price of \$0.27 per share for a term of two years from the date of issuance. In relation to this placement the Company paid \$67,533 in cash finder’s fees and issued 312,655 finders warrants exercisable at \$0.18 for two years from the date of issuance.

During the year ended December 31, 2021, 4,741,000 warrants were exercised and converted into common shares for total proceeds of \$687,500. An additional 250,000 warrants for proceeds totaling \$30,000 received in December 2021 were converted into common shares after December 31, 2021.

During the year ended December 31, 2021, 1,260,000 stock options were exercised and converted into common shares for total proceeds of \$168,000. An additional 5,000 options for proceeds totaling \$500 received in December 2021 were converted into common shares after December 31, 2021.

On June 2, 2022, FireFox announced an arm’s length shares-for-debt agreement with Oy Kati Ab Kalajoki (“Kati”), a leading provider of drilling services in Finland, under which it issued 1,056,997 common shares as payment for drilling services. At the time of the agreement, the shares had a fair value of \$0.15 per share and hence accounted for settlement of invoices totaling \$158,549.

FireFox closed the first tranche of a non-brokered private placement on June 29, 2022 under which it issued 3,228,643 units at a purchase price of \$0.14 per unit for gross proceeds of \$452,010. Each unit consisted of one common share of the Company and one common share purchase warrant, with each whole warrant being exercisable to acquire one additional common share of the Company at an exercise price of \$0.21 per share for a term of two years from the date of issuance. In association with this tranche of the private placement, FireFox paid cash finder’s fees of \$2,520 and issued 15,000 finder’s warrants, which are exercisable at a price of \$0.21 for 2 years from the date of issuance.

On July 7, 2022, the Company closed a second tranche to the above mentioned non-brokered private placement for an additional \$50,000 of gross proceeds. This second tranche included the issuance of an additional 357,143 units of the Company at a purchase price of \$0.14 per unit. Each unit consisting of one common share of the Company and one common

FIREFOX GOLD CORP.*Management Discussion and Analysis*

September 30, 2023

share purchase warrant, with each whole warrant being exercisable to acquire one additional common share of the Company at an exercise price of \$0.21 per share for a term of two years from the date of issuance. This brought the total gross proceeds of the private placement to \$502,010.

In October 2022, the Company raised gross proceeds of \$506,000 by issuing 5,060,000 units of the Company at a purchase price of \$0.10 per unit. Each unit consisted of one common share of the Company and one-half common share purchase warrant, with each whole warrant being exercisable to acquire one additional common share of the Company at an exercise price of \$0.18 per share for a term of two years from the date of issuance. The Company paid qualified finders \$1,800 in cash finders fees and issued 18,000 finders warrants exercisable at \$0.18 for 2 years from the date of issuance in association with this private placement.

In December 2022, the Company raised total gross proceeds of \$1,065,080 by issuing 13,318,500 units at a purchase price of \$0.08 per unit. Each unit consisted of one common share of the Company and one common share purchase warrant, with each whole warrant being exercisable to acquire one additional common share of the Company at an exercise price of C\$0.12 per share for a term of two years from the date of issuance. In association with this financing the Company paid qualified finder's fees of \$ 25,841 and issued 323,010 finder's warrants. The Company also paid \$6,480 in advisory fees and issued 81,000 advisory warrants.

In March 2023, the Company raised total gross proceeds of \$623,500 by issuing 6,235,000 units of the Company at a purchase price of \$0.10 per unit. Each unit consists of one common share of the Company and one common share purchase warrant, with each whole warrant being exercisable to acquire one additional common share of the Company at an exercise price of \$0.15 per share for a term of two years from the date of issuance. The Company paid to qualified finders \$2,700 in cash finder's fees and issued 27,000 finders warrants exercisable at \$0.15 for 2 years from the date of issuance in association with this private placement. The Company paid \$12,000 in agency fees and issued 120,000 agency warrants exercisable at \$0.15 for 2 years from the date of issuance in association with this private placement.

In April 2023, the Company completed a second tranche of the non-brokered private placement announced on February 27, 2023. It raised total gross proceeds of \$355,000 by issuing 3,550,000 units of the Company at a purchase price of \$0.10 per unit. Each unit consists of one common share of the Company and one common share purchase warrant, with each whole warrant being exercisable to acquire one additional common share of the Company at an exercise price of \$0.15 per share for a term of two years from the date of issuance. The Company paid qualified finders \$1,500 in cash finder's fees and issued 15,000 finders warrants exercisable at \$0.15 for 2 years from the date of issuance in association with this private placement. The Company paid \$19,800 in agency fees and issued 198,000 agency warrants exercisable at \$0.15 for 2 years from the date of issuance in association with this tranche.

In September 2023 the Company closed a non-brokered private placement (the "Private Placement") raising total proceeds of \$323,498 by issuing 4,621,414 units of the Company ("Units") were offered at a price of \$0.07 per Unit. Each Unit consisted of one common share of the Company ("Common Share") and one common share purchase warrant ("Warrant"), with each whole Warrant being exercisable to acquire one common share of the Company (a "Warrant Share") at an exercise price of \$0.10 per Warrant Share for a term of two years following the closing of the Private Placement. The Company paid qualified finders \$840 in cash finder's fees and issued 12,000 finders warrants exercisable at \$0.10 for 2 years from the date of issuance in association with this private placement.

During the year ended December 31, 2022, 10,777,166 warrants were converted to common shares for total proceeds of \$1,257,800, of which \$30,000 was received before December 31, 2021. All shares issued in the previously described financings were subject to statutory hold periods.

FIREFOX GOLD CORP.

Management Discussion and Analysis

September 30, 2023

PROPERTY DESCRIPTIONS

Riikonkoski, Jeesiö, and Ylöjärvi Properties (“RJY Properties”)

On August 1, 2017, the Company entered an option agreement with Magnus Minerals Ltd. (“Magnus”), a company incorporated under the laws of Finland, whereby Magnus granted FireFox an exclusive right and option to earn and acquire a 100% interest in each of the Riikonkoski (East and West), Jeesiö (including Jeesiö West) and Ylöjärvi (including Oks) Projects, which are located in Finland and owned at the time by Magnus (the “RJY Option Agreement”). Since originally entering into the option agreement, certain extensions were formally granted by Magnus to commitment dates under the RJY Option Agreement. In January 2021 FireFox announced that it had completed its exploration expenditure commitments and cash payments, fully exercising its option.

Pursuant to the RJY Option Agreement, FireFox completed the following commitments:

- (i) issued 6,000,000 common shares to Magnus;
- (ii) incurred \$3,919,734 in exploration expenditures on the RJY Properties; and
- (iii) made cash payments to Magnus totaling \$250,000.

Under the terms of the RJY Option Agreement FireFox remains obligated to pay Magnus an additional payment, equal to the value of 1,000 troy ounces of gold, within 12 months of the commencement of commercial production. In addition, under the RJY Option Agreement, FireFox granted Magnus a 1.5% net smelter return royalty (NSR), which may be reduced to 1% by the payment to Magnus of 1,000 troy ounces of gold within 90 days of publishing a positive feasibility study. Pursuant to the RJY Option Agreement, Magnus has agreed to provide mineral exploration services to FireFox.

Jeesiö Project

The Jeesiö Project presently consists of twelve distinct tenement blocks, including nine exploration permit applications and three valid exploration permits (Figure 1). The total size of the Jeesiö tenements is currently 75.7 km².

The northern boundary of the Jeesiö exploration permit applications is only 2 kilometers south from the Aamurusko gold discovery (Risti Property) by Aurion Resources Ltd (TSX-V:AU), and 12 kilometers SSW from the Pahtavaara Gold Mine (350,000 oz. produced), currently being explored and redeveloped by Rupert Resources Ltd (TSE:RUP). Numerous smaller drilled prospects and deposits are located in the vicinity of Jeesiö.

[FireFox cautions that being near a discovery, or past-producing mine with a resource, does not indicate that mineralization will occur on FireFox’s property, and if mineralization does occur, that it will occur in sufficient quantity or grade that would be economic to mine. These facts were referenced here to provide context for the prospectivity of the FireFox properties.]

Portions of the Jeesiö property straddle the Sirkka Shear Zone or related regional-scale structures. FireFox purchased and reprocessed government low-altitude airborne geophysical survey data, which helped guide target generation. Despite its location along these important controlling structures, the Jeesiö area has seen only limited exploration work. Therefore, Jeesiö is considered a greenfield exploration target. Prior to FireFox’s work, the Jeesiö area was covered by government funded regional till sampling programs, but only one small gold prospect, Homelampi, was drill tested. These 4 shallow holes returned low grades (0.1-0.3 grams per tonne Au) over intervals up to several metres long, with the best intersection returning 0.3 grams per tonne (g/t) Au over 2.07 metres.

Work completed by Firefox through to the end of 2020 is chronologically summarized below, followed by details of the last two years programs and current interpretations.

FIREFOX GOLD CORP.

Management Discussion and Analysis

September 30, 2023

2018:

- Geological mapping, till sampling, and magnetic surveys in the NE tenement area

2019:

- Prospecting and rock sampling over throughout the property
- Induced polarization/resistivity (IP) survey at the Utsamo target
- A 3-hole 466m reconnaissance diamond drilling program at the Utsamo target

2020:

- Mapping, sampling and exploration trenching
- A 2.4km² ground magnetics survey over of Katajavaara target
- Applied for an exploration permit covering Katajavaara, Katajavaara South and Saittavaara targets
- Detailed UAV high-resolution airborne magnetics survey over the property
- A second reconnaissance diamond drilling program of 4 holes (455) at Utsamo

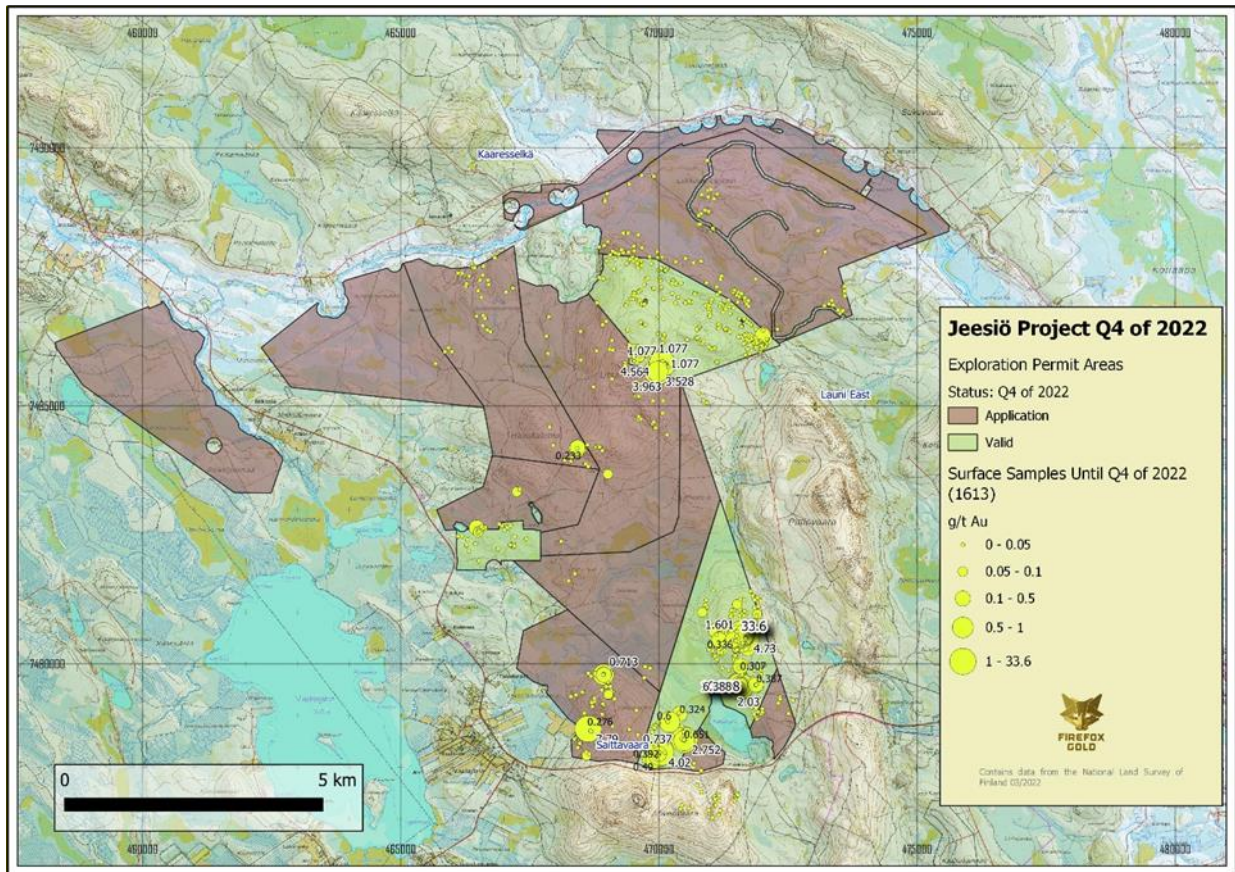


Figure 1 - A map showing the Jeesiö property outlines with all the gold assayed surface samples until Q4 of 2022.

BOT sampling re-started in January 2021 at the Jeesiö Property and the program tested the five-kilometre-long Utsamo Corridor of complex faults and shears that are believed to occupy a flexure in the Sirkka Shear Zone (SSZ) that crosses the northeast portion of the project. The previous BOT campaign was reconnaissance in nature, comprised of only two parallel sampling lines 2.5 kilometres apart. That work led to shallow drill holes that penetrated a thick section of fault gouge on a likely splay of the SSZ but no significant gold.

FIREFOX GOLD CORP.

Management Discussion and Analysis

September 30, 2023

By September 30, 2021, the teams had collected 1,012 new BOT samples, increasing the total number of BOT samples at the Utsamo area to 1,233 (Figure 2). These samples were comprised primarily of dense basal till, often mixed with weathered bedrock. Glacial overburden encountered during the BOT sampling occasionally reached depths of up to 35 metres, suggesting deeply weathered terrane that may indicate the presence of faults or shear zones. Significant pathfinder anomalies were identified, especially from the northwestern portion of the Utsamo area. These pathfinder elements, such as bismuth, (Bi) tellurium, (Te) and antimony (Sb) are strong indications of orogenic gold in this geological terrane. Firefox used the BOT campaign to build a more detailed structural map of the Utsamo Corridor with associated gold, multi-element geochemistry and alteration.

In Q4 of 2021 Firefox tested these BOT-anomalies with a 5-hole diamond drilling campaign (1113.3 metres). None of these holes encountered significant gold mineralization, and the results were reported on April 5, 2022. The drill holes encountered dominantly metasedimentary rocks with lesser mafic volcanics, which were variably cut by thin zones of albite-silica-carbonate alteration with disseminated magnetite and pyrite.

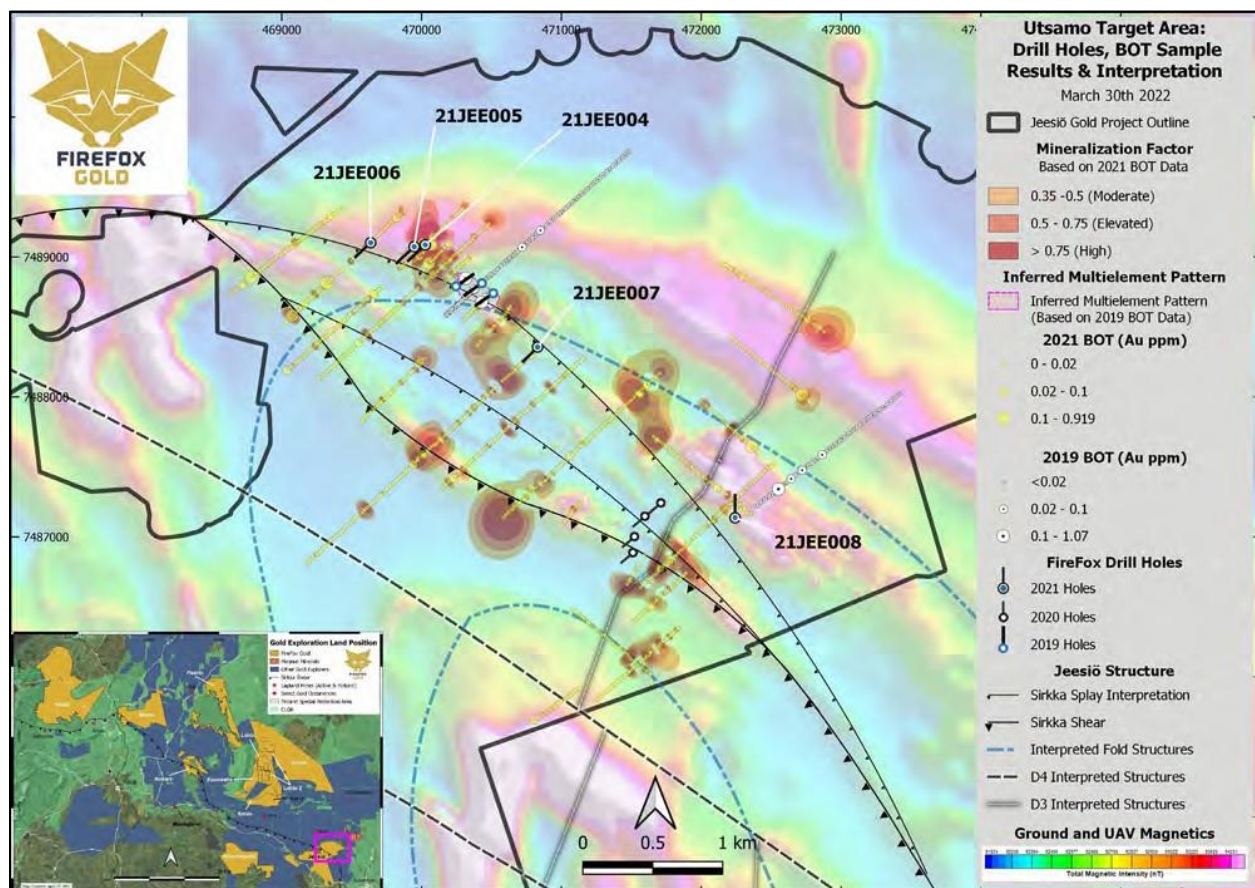


Figure 2. BOT Survey and Structure in Utsamo Corridor at Jeesiö Project

More than 5 kilometres south of the Utsamo Target FireFox has delineated several additional targets, potentially associated with the interpreted Venejoki Shear Zone, a major transcrustal thrust system running broadly in a West-East direction south of the Sirkka Shear Zone.

FIREFOX GOLD CORP.

Management Discussion and Analysis

September 30, 2023

FireFox conducted a short reconnaissance drilling program at the southernmost target, (“Saittavaara”) in early May 2021. This drilling campaign targeted the anomalous grab samples collected earlier in FireFox’s 2020 summer program (Figure 3). These six holes, totaling 309.1 metres, were the first known drilling in the area by any operator. Two of the six holes encountered anomalous gold mineralization of more than 0.9 g/t. Drill hole 21JE002 intercepted a near-surface zone of 4.0m averaging 2.03 g/t Au, including 2.0m at 3.18 g/t Au.

Drill hole 21JEE002 intersected intensively sheared and sericitized quartzite from just below shallow overburden. There are several quartz veins with strongly sheared and silicified wall rock. Geologists have described the zone of intense shearing and obvious deformation as a mylonite. As disseminated pyrite is prevalent but variable, the alteration may be termed quartz-sericite-pyrite (QSP), which is commonly seen in orogenic gold deposits. A massive to milky quartz zone with disseminated pyrite between 11 and 17 metres downhole carries the best gold grades, averaging 1.48 g/t over its entirety. The siliceous interval continues downhole to 84.2 metres, including additional narrow zones of more intense QSP alteration at 25.0 metres and 66.0 metres depth with gold values of 1.05 and 0.527 g/t, respectively. Pyrite is most abundant in the shallower higher-grade interval. At approximately 84.2 metres the mylonite zone passes into an unaltered greywacke unit.

Drill hole 21JEE001 was drilled west towards 21JEE002 in a scissor fashion since the orientations of the quartz veins and structures in the area were not known. It encountered similar lithology including QSP-altered and veined quartzites from surface to approximately 37 metres depth downhole. The drill hole intersected several quartz veins with more abundant pyrite down to approximately 14.40 metres. The best gold mineralization was associated with multiple quartz-pyrite (oxidized) veins over approximately 4 metres from 25.0 to 29.0 metres downhole, including one metre that assayed 0.96 g/t Au. The quartzite gives way to weakly silicified greywacke sediments at approximately 37 metres downhole.

Drill hole 21JEE003 was collared approximately 500 metres northeast of the first two holes. It encountered a narrow mylonite zone near surface but consisted mainly of unaltered greywacke from 9.0 to 98.35 metres downhole, followed by a mafic intrusion with patchy quartz-carbonate veins to the end of the hole. There were no significant gold assays returned.

After the encouraging scout drilling results at Saittavaara, FireFox conducted a small-scale mapping campaign around the area late in Q3 of 2021. The team located several gold anomalous rock chip samples from local boulder material, yielding gold up to 7.79 g/t. The highest gold values were received from a chip sample collected from a sulphide rich quartz vein that was observed crosscutting the mafic intrusive in surface boulders or outcrop. The Company submitted an additional exploration permit application to the northwest from the encouraging drilling and encompassing the area of the highly anomalous rock sample. The new permit application covers approximately 4.67 km² (Figure 3).

Additional diamond drilling took place at Saittavaara in late Q4 2021, and the results were reported on April 4, 2022. Despite favorable indications from geophysics along the trend, drill holes 21JEE009 and 21JEE010 did not encounter significant gold or the same strong deformation or alteration previously noted in the area. The two holes totaled just under 400 metres of drilling.

Along the trend to the north (approximately 2 kilometres), FireFox geologists identified high-grade gold in outcrop (10.5 g/t Au) from quartz-magnetite-sulphide vein samples in 2019 and 2020 (see Company news release dated October 6, 2020). The anomalous samples are associated with the southwest margin of a magnetic body believed to represent mafic intrusive or volcanic rocks. This was the target of the 2022 exploration trenching campaign at Katajavaara South (KJ South) and Katajavaara Hill (KJ Hill). The results were reported in a news release dated January 25, 2023 and are summarized in Figure 4 and Table 1. The team excavated 9 small exploration trenches and collected 68 chip/channel and 34 grab samples from bedrock. Channel samples were taken perpendicular to observed mineralized veins and structures to represent true width.

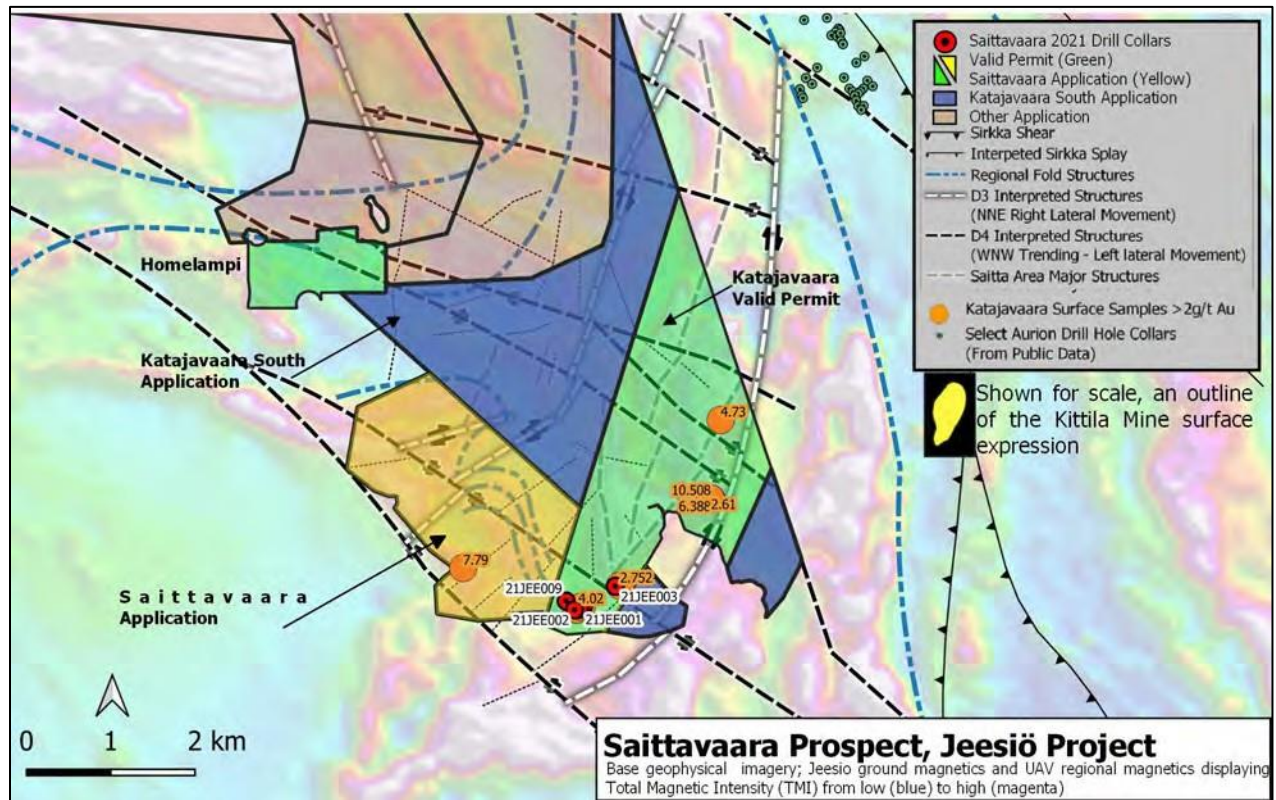


Figure 3. Saittavaara Prospect drill hole locations presented with FireFox’s structural interpretation

The trenches exposed the intensely sheared contact between siliciclastic metasedimentary and mafic intrusive rocks, revealing several mineralized quartz-sulphide veins and lenses within both units. In addition to pyrite and magnetite, geologists also noted the presence of chalcopyrite and copper oxides in these samples. The gabbro in the area is likely attributable to mafic sills that are related to a younger continental rift setting (Haaskalehto-type), which are common at the Jeesiö Project. The mineralization encountered in the trenches is clearly controlled by shearing, as it crosscuts both lithologies and the contact between them. Among several samples at KJ South containing strongly anomalous gold, one chip channel sample averaged 1.33 g/t gold over 0.8 metres. Another grab sample contained 1.43 g/t gold.

KJ Hill is located approximately 900 metres to the north of KJ South along the trend of a N-S oriented magnetic feature. Along the eastern slope of the hill, there are fields of locally derived boulders displaying abundant mineralized quartz veins intruding metasedimentary (arkose and quartzite) and mafic rocks. FireFox teams collected grab samples from boulders of these quartz veins in 2020, including one sample with 4.73 g/t Au (see Company news release dated October 6, 2020). This trend of anomalous samples is approximately 400 metres long and appears to be associated with a younger structure that crosscuts the north-trending magnetic anomaly in a northeasterly direction.

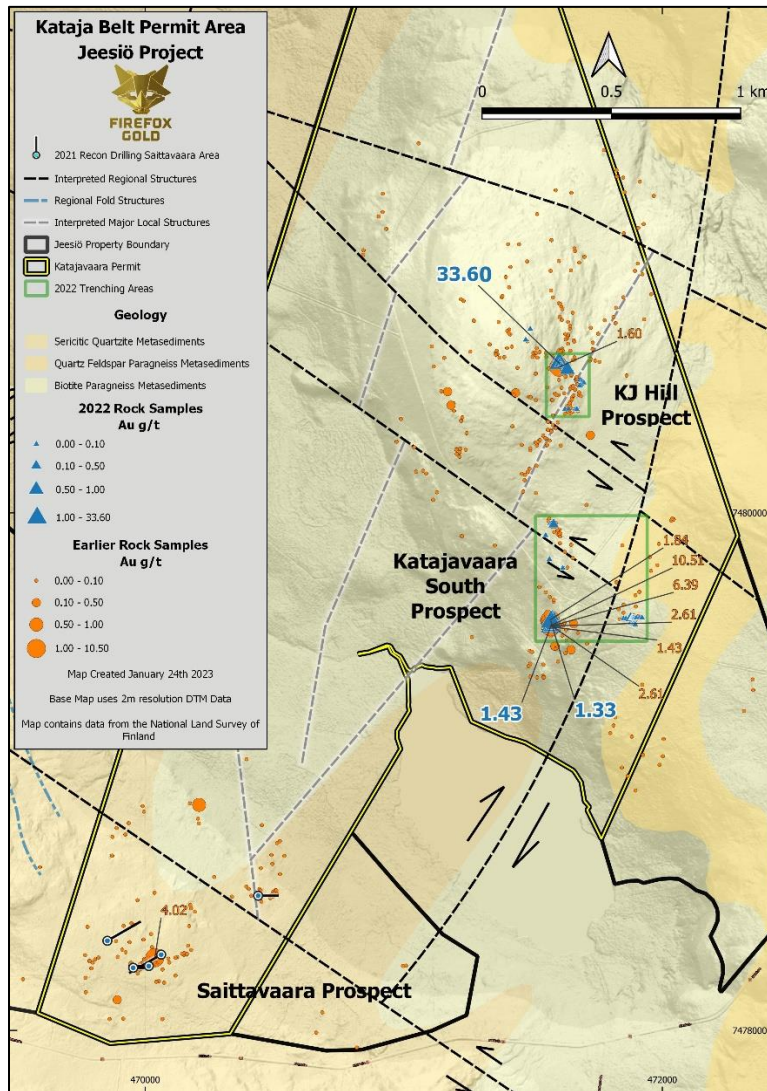


Figure 4. The 2022 trenching campaign locations with anomalous gold values highlighted.

At KJ Hill, the team cut six trenches that exposed several quartz lenses and veins hosted in siliciclastic metasedimentary rocks. The mineralization exposed in the trenches was relatively simple, quartz with chlorite and minor sulfides (partially oxidized). The highest-grade sample was 33.60 g/t Au from a bedrock grab sample of quartz vein. The extent of gold mineralization at both KJ South and KJ Hill is not known, as the gold anomalies are undrilled and remain open along strike and at depth. Firefox commenced a limited mapping and sampling program, accompanied by ground magnetics, at Jeesiö NE, Saittavaara and Katajavaara during Q3 of 2023. Results of these campaigns are expected during the winter of 2023 – 2024.

FIREFOX GOLD CORP.*Management Discussion and Analysis*

September 30, 2023

Table 1. Selected highlights of the 2022 Katajavaara sampling campaign.

Target	Sample Type	Rock Type	Sample Weight (kg)	Gold (g/t)
KJ Hill	Grab	Quartz vein with minor chlorite, slightly weathered	1.53	33.60
KJ Hill	Chip - channel	Quartz vein with mica and chlorite, minor weathering,	2.52	0.72
KJ Hill	Grab	Quartz lens-vein, rusty surface, with weathered sulphides	2.65	0.59
KJ South	Grab	Quartz vein pieces with red staining, vuggy texture	5.02	1.43
KJ South	Chip - channel	Mafic intrusive. Silicified matrix with pyrite nest	1.49	1.33
KJ South	Chip - channel	Quartz lens with pyrite, chalcopyrite, magnetite, and Cu and Fe-oxides	1.8	0.65
KJ South	Grab	Quartz lens with pyrite, chalcopyrite, and minor Cu and Fe-oxides	3.64	0.64
KJ South	Chip - channel	Quartz lens with pyrite, chalcopyrite, and minor Cu and Fe-oxides	7.11	0.49
KJ South	Chip - channel	Quartz lens with chlorite and traces of disseminated pyrite	1.71	0.48
KJ South	Grab	Quartz vein with pyrite, malachite, goethite, and magnetite stringers	2.09	0.46

Ylöjärvi Project

The Company's Ylöjärvi property (1.01 km² in total size) is secured by an exploration permit application. Ylöjärvi is located in the western branch of the Tampere Schist Belt, a volcano-sedimentary belt well-known for its historical and active gold mining.

The area of the Ylöjärvi tenement saw only minor exploration work prior to FireFox's involvement. The Company's exploration targeting work at Ylöjärvi focused on the similarities in geochemistry, style of alteration and structural geology of the volcanic sequences to those features observed near the gold mines of the region. In addition, the presence of numerous high-grade glacial erratics and gold anomalies in till or soil support the general prospectivity of the area. Additional exploration work will have to be performed in order to ascertain whether there is significant mineralization associated with these initial indicators.

Riikonkoski Project

The Company scaled back its exploration at the Riikonkoski Project, but it still controls an exploration permit application covering 117.05 hectares. The area is prospective for gold and copper mineralization and includes some historic drilling that reported narrow intervals of relatively high gold and copper grades. The project lies very close to the Sirkka Shear Zone, which is a pronounced Au-deposition controlling structure within the Central Lapland Greenstone Belt. In the immediate vicinity of the Riikonkoski tenement, two closed mines, Saattopora Au-Cu mine and Sirkka Cu-Ni-Co-Au-Ag mine, have been operated in the past.

Mustajärvi Project

On December 14, 2017, the Company entered into an agreement whereby it paid a total of €30,000 and issued 400,000 common shares to a Finnish junior exploration company, Aurora Exploration Oy ("Aurora"), to acquire a 100% interest in the Mustajärvi Project. Aurora retains a 1% NSR on all metals sold from the Mustajärvi Project, 50% of which can be repurchased by FireFox for USD \$500,000. The repurchase right is exercisable at any point within 180 days of the Company's receipt of a positive feasibility study for the project.

FIREFOX GOLD CORP.

Management Discussion and Analysis

September 30, 2023

FireFox Gold expanded the original Mustajärvi Project by applying for two additional exploration permits, covering the continuation of the Mustajärvi shear zone towards the southwest from the Mustajärvi permit (Mustajärvi West) and extending the property holding east of the Mustajärvi permit (Mustajärvi East) (Figure 5). Both new permits were granted in Q1 2023 and the total coverage of valid exploration permits is approximately 4.6 km² in area.

The Mustajärvi Project is located adjacent to a southern splay of the Sirkka Shear Zone, which is termed the Venejoki Shear Zone. Together, these are deep crustal-scale structural systems that have controlled the emplacement of more than 40 gold deposits in the region. The mineralization at Mustajärvi is typical of an orogenic gold deposit hosted by albitized metasediments and volcanoclastic rocks. The gold is associated with pyrite-bearing quartz and quartz-carbonate-tourmaline veins, as well as silica-pyrite replacement of metasedimentary rocks. Only the top-most 50 metres of the bedrock had been drill tested by previous workers.

Historic drilling by Outokumpu Oy yielded high grade intersections including 2.7m @ 14.6 g/t Au (from 20.7 metres), 12.0m @ 2.7 g/t Au (from 21.0 metres), and 1.0m @ 18.8 g/t Au (from 41.0 metres).

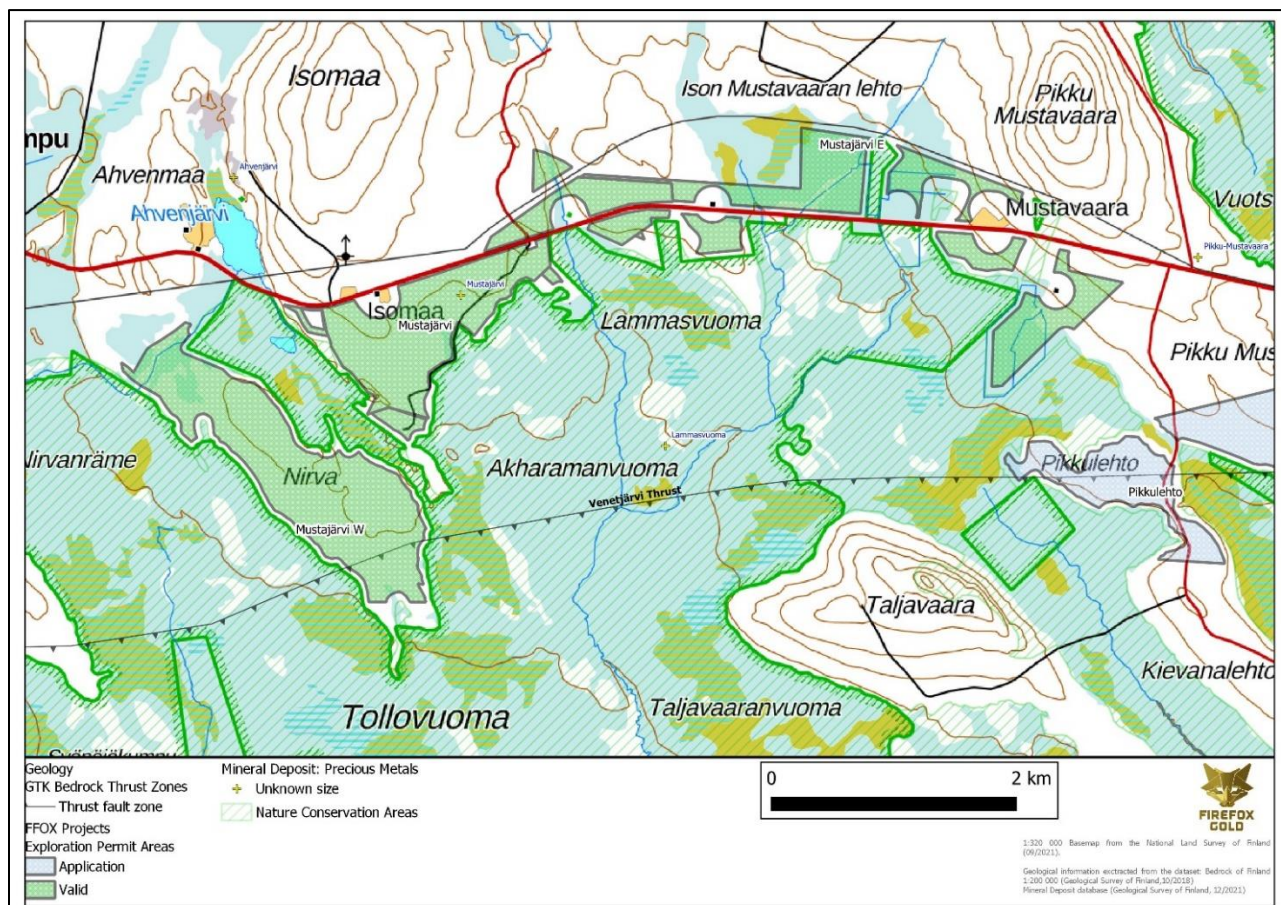


Figure 5. Mustajärvi Project Property Outlines, March 2023

Work Completed by Firefox through to June 2023 is chronologically summarized below, followed by details of the most recent two years and current interpretations. Multiple phases of drilling at Mustajärvi are graphically presented on Figure 6 and detailed in Table 2 following the summary.

FIREFOX GOLD CORP.

Management Discussion and Analysis

September 30, 2023

2018:

- Magnetic and Electromagnetic geophysical surveys outline potential deep structures
- Base of till (BoT) sampling program outlined anomalous gold that is potentially related to interpreted structures
- Chip and channel sampling identified intersecting mineralized structures in the Central Zone
- Phase 1 Drill Program confirmed historical drill results and discovered new style of mineralization at depth

2019:

- Encountered first mineralization coincident with induced polarization/resistivity (IP) anomalies
- Central zone outlined along 400 metre strike length and remained open along strike and at depth
- Phase 2 Drill Program hit gold in two step-out holes, 500 metres northeast of the Central Zone

2020:

- Trenching and detailed sampling of key structures and alteration
- 9-hole diamond drilling program

2021:

- 15 drill holes totaling 4,057.5 metres hit the first bonanza grades at the Northeast Target
- Discovery of high-grade at the East Target and expansion of the Northeast Target
- Completed IP profiles over several target areas

2022:

- Winter – spring drilling tested for possible extensions of the Central Zone, the East Target and new targets at the Gabbro Target (western portion of the permit) – returned high-grades over greater thicknesses at the East Target
- Late Q2, a detailed BoT program at the East Target area (82 samples at 20m spacing) yielded gold and multielement anomalies that correlated well with the interpreted Mustajärvi Shear Zone
- A second round of drilling in Q3 of 2022 (5 drill holes) confirmed the lateral continuity of shallow mineralization at the East Target and demonstrated the importance of cross structures for grade and thickness of gold mineralization.

2023:

- Spring drilling campaign - 9 diamond core holes totaling 1540.6 metres. These drill holes were designed to infill gaps in the modelled near-surface gold shapes and test for significant extensions to the west and southwest at the East Target area. The campaign successfully extended the East Target mineralization to the west, southwest, and southeast, including a major step-out of 215m along strike towards the southwest.
- Limited test trenching program on the East Target resulted in significant high-grade gold beneath a few metres of glacial overburden.

FireFox's 2020 structural model identified repetitive dilatant zones along the MSZ where vein swarms and higher-grade gold are concentrated. This model has driven drill targeting, and to date has resulted in the identification of three main areas of gold mineralization along a 2.1-kilometre segment of the MSZ, namely the Central Zone, the Northeast Target, and the East Target (Figures 7 and 8). Gold mineralization is normally related to quartz-carbonate-tourmaline-pyrite (QCTP) veins or a replacement style of mineralization associated with quartz-sericite and disseminated, patchy, or semi-massive pyrite. Through June 2023, Firefox has drilled a total of 12 holes yielding gold grade-thickness measurements of more than 90 gram-metres (expressed as gold grade * thickness of mineralization). Selected drilling highlights from the Central Zone, Northeast Target and East Target until 2022 are presented in table 3. The results of the 2023 drilling campaign are discussed in more detail later in the text.

FIREFOX GOLD CORP.
Management Discussion and Analysis

September 30, 2023

Table 2. Individual phases of drilling at Mustajärvi; Drill holes from 2018 to 2023

Drilling Time Period	Holes (#)	Metreage	Target Area
Historic: 1990-92	12	706	Central Zone
2018	8	1,094	Central Zone
2019	9	1,431	Central Zone + Step outs
2020	9	1,425	Central Zone, Gabbro Target, NE Target
2021	15	4,058	NE Target, E Target, Gabbro Target, Central Zone
2022	25	3,904	E Target, NE Target, Gabbro Target, Central Zone
2023 (through June)	9	1,541	E Target
Total metres = 14,158			

Table 3. Selected highlights from Mustajärvi Central, Northeast & East targets drilling from 2018 to 2022

Drill Hole	Depth (m)	From (m)	To (m)	Interval (m)	Gold (g/t)
Central Zone					
18MJ002	82.1	30.6	34.7	4.1	1.87
	including	34.35	34.7	0.35	11.6
	and	62.7	63.5	0.8	3.96
18MJ010	154.8	125.5	127.5	2	45.1
	including	126.5	127	0.5	73.7
Northeast Target					
21MJ001	292.6	172.9	174.15	1.25	5.27
		184.15	185.5	1.35	93.88
	including	184.85	185.5	0.65	129.5
		220.35	221	0.65	26.9
21MJ010	350.5	154.15	170.6	16.45	7.69
	including	155.3	155.95	0.65	28.57
	and	157.4	158	0.6	24.7
	and	159.9	160.85	0.95	12.7
	and	162	167	5	5.56
	and	168.4	170.6	2.2	22.34
	including	168.4	169.3	0.90**	42.47
21MJ013	445.1	157.15	157.9	0.75	41.46
21MJ014	413.6	168.5	170	1.5	45.85
	including	168.5	169	0.5	130.5
22MJ001		149.8	160.7	1.9	8.96
	including			1	14.5
East Target					
21MJ005	120.5	15	16	1	3.79
21MJ015	319.4	45.55	48	2.45	7.97
22MJ003		13.6	17.6	4	6.35
	including			0.8	25.93
22MJ005	189	33.6	35.7	2.1	8.26
		57	57.8	0.8	12.53
22MJ006	71.3	24.15	38	13.85	14.39
	including	24.15	29.8	5.65	25.02
Most drilling is believed to be roughly perpendicular to the dip of the mineralization, however, true widths are not yet known. **Including 0.4m of core loss					

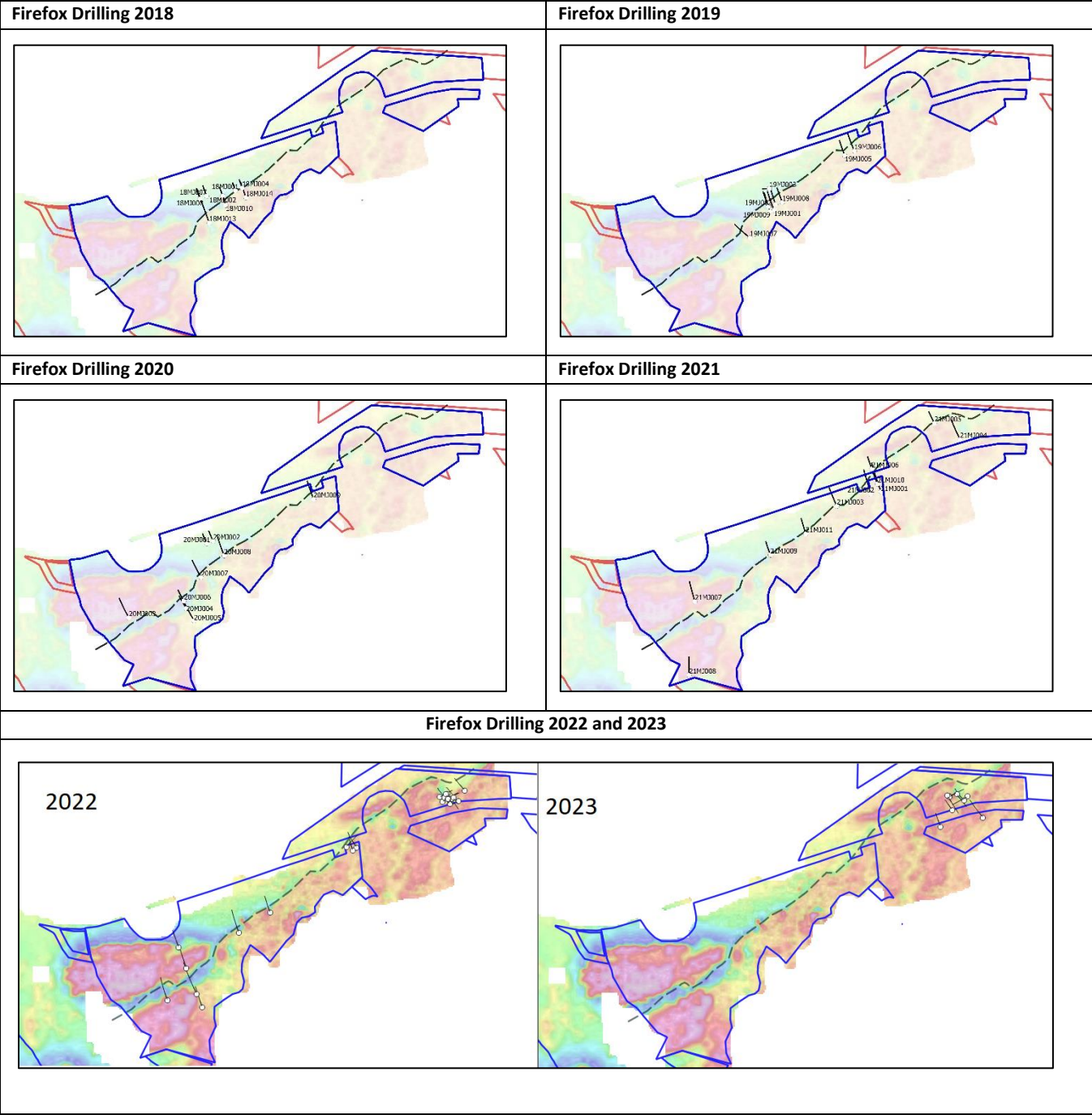


Figure 6. Individual phases of drilling at Mustajärvi; Drill holes from 2018 to 2023

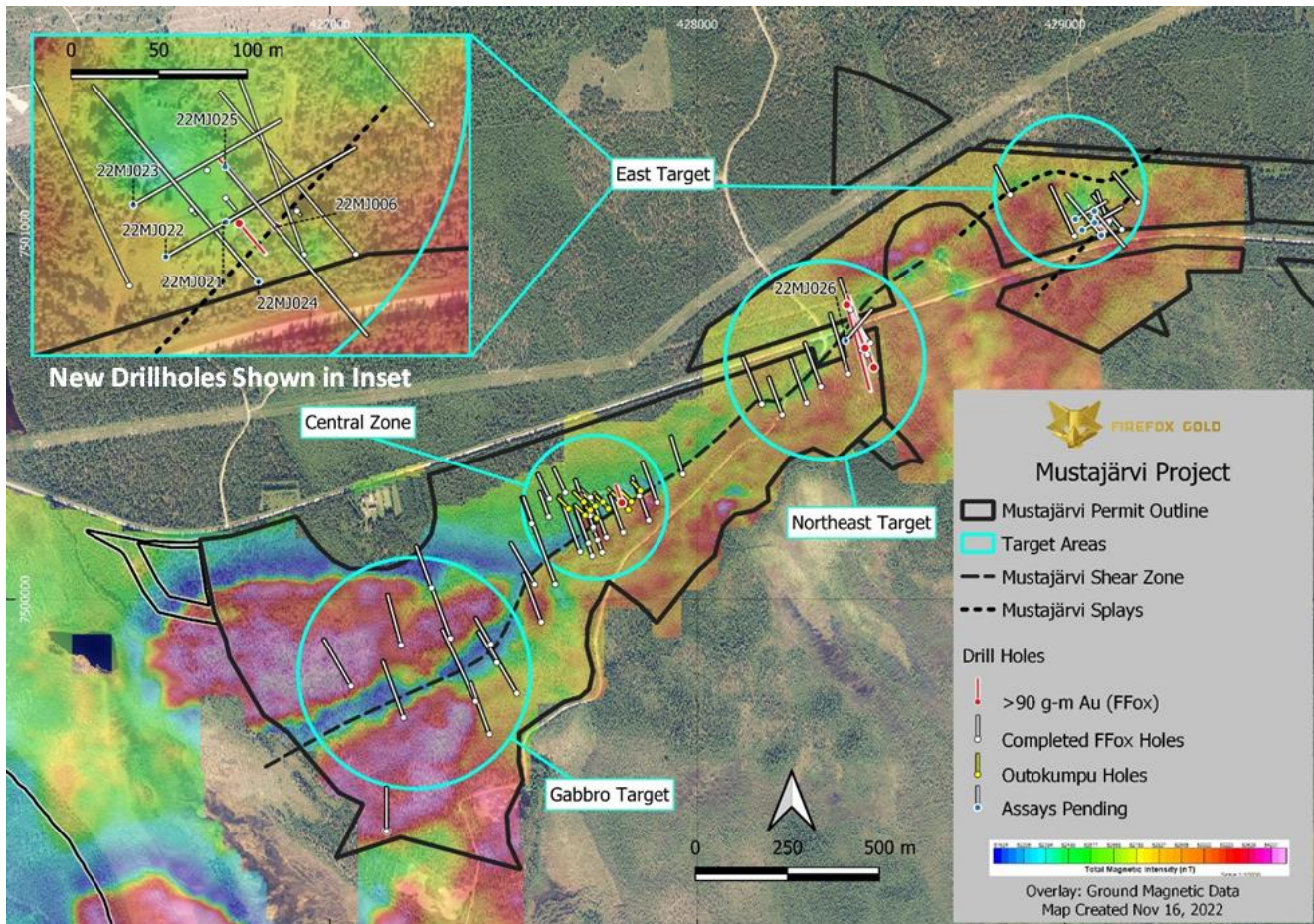


Figure 7. Mustajärvi Drill Collar Locations Relative to Structural Interpretation over Magnetics as of Nov 2022

A component of FireFox’s ongoing work at Mustajärvi is to identify structure, host rocks and/or alteration that may host bulk-style intercepts of gold in addition to the high gold grades already encountered at the project. Drilling during 2022 tested the southwest part of the Mustajärvi permit where fractured gabbro-intrusive bodies occur (the Gabbro Target). The MSZ cuts through the gabbro, observed as magnetic low zones, providing a good potential to discover additional gold mineralization along the interpreted Mustajärvi Shear Zone. Initial drill tests in this area have not yielded significant results, but interpretive and target generation work continues in the Gabbro Target.

In 2021, the predictive 3-D modeling of the dilatant zones identified the East Target, which was first confirmed by modest shallow gold-mineralization intercepted in two holes drilled 650 metres northeast from any previous drilling. Drillholes 22MJ003 and 21MJ015 intercepted near-surface high-grade gold mineralization spanning approximately 55m along strike of this new target. Further drilling completed in spring 2022 tested both vertical and lateral extent of high-grade gold mineralization at the East Target with both shallow and deeper holes. The July 2022 drill results from the East Target included hole 22MJ006 that returned a 13.85-metre interval averaging 14.39 g/t gold. Expressed in terms of grade-thickness, this interval measures 199 gram-meters of gold, the strongest mineralized interval drilled at Mustajärvi at that point in time. The initial results from the East Target upgraded the perception of the Mustajärvi Project due to the shallow depths and high-grade encountered.

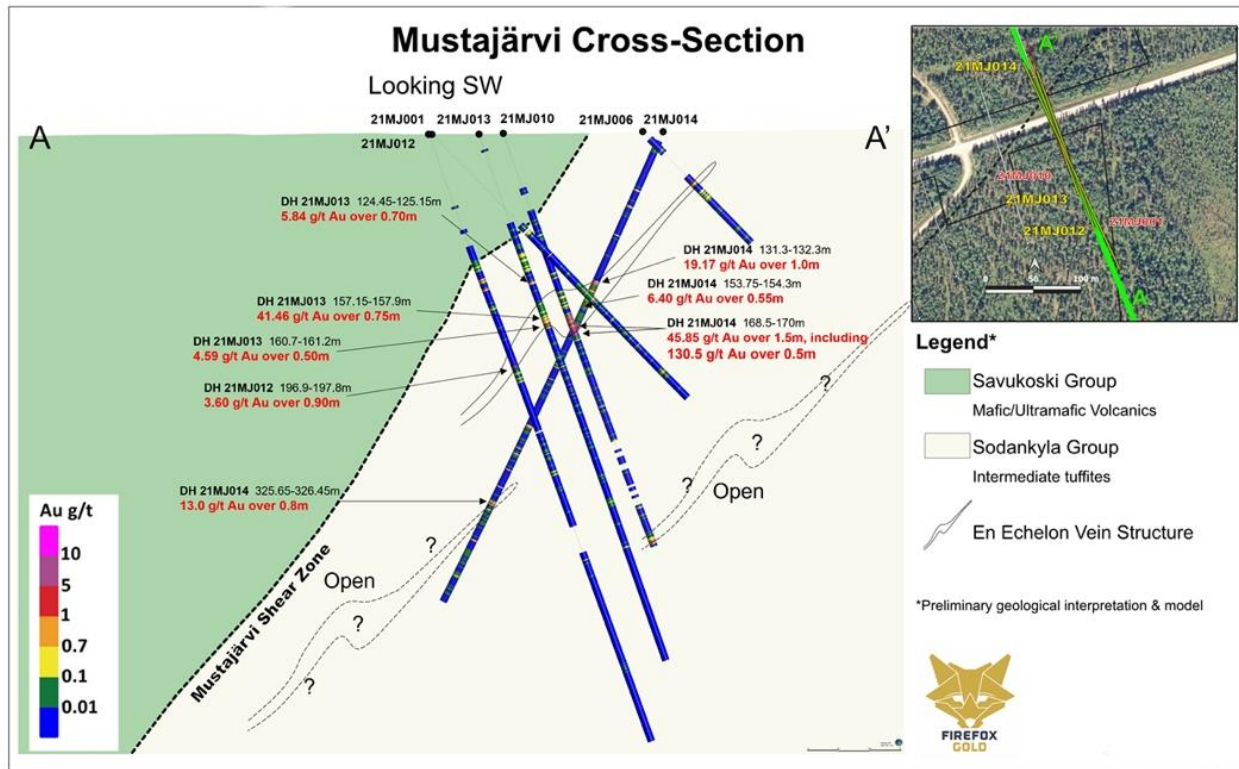


Figure 8. Cross Section through high-grade portion of the Northeast Target, looking SW; showing en-echelon veins subparallel to the Mustajärvi Shear

The high-grade zone in 22MJ006 was subjected to a 1,000-gram screen fire assay procedure, according to protocol for the Mustajärvi Project. The screen fire results confirmed remarkably consistent gold mineralization over the 13.85-metre interval, except for one sample that contained significant coarse gold. The complete results of overlimit gravimetric and screen fire gold assays from 22MJ006 were reported in a Company news release dated September 6, 2022. One sample from 25.05-26.00 metres downhole returned a total gold grade of 439 g/t by screen fire assay. This bonanza grade sample was part of a field duplicate pair that contained total gold of 15.85 g/t. Hence, the average gold content of the sample (including both field duplicates) was 227.4 g/t. Incorporation of the screen fire analyses into the wider high-grade gold interval resulted in a weighted average of 28.74 g/t over 13.85 metres.

Coarse gold is something for which explorers must plan when drilling an orogenic gold system. However, visual logging will never identify all coarse gold in drill core or rock samples. Despite abundant high-grade gold assays, FireFox geologists believe they have recognized visible (coarse) gold in only three drill holes so far on the Mustajärvi Project, most notably in the first hole of the 2021 drill program. Two of the three drill holes with likely visible gold were in the Northeast Target, and one hole in the East Target may have contained very small grains of visible gold (22MJ018). There was no such report in the log from 22MJ006.

The sequence in drill hole 22MJ006 is pervasively altered by albite with variable but intense silica and sericite. There is increased pyrite from approximately 24.5 metres through approximately 36 metres downhole. The strongest gold values in the mineralized interval are associated with bands or clots of semi-massive to massive pyrite, which is sometimes oxidized in the shallow portions of these holes. The host rocks at the East Target seem to include more sedimentary rocks (laminated siliciclastic rocks) and mafic volcanics or intrusions than have characterized either the Central Zone or the Northeast Target.

FIREFOX GOLD CORP.

Management Discussion and Analysis

September 30, 2023

Some of the banded and semi-massive pyrite appears to be replacing foliations or bedding in metasedimentary rocks. The zone is also cut by QCTP veins, often with molybdenite. Structures are frequently in evidence, based on intense fracturing, open space, and intense oxidation.

After a review in 2022, FireFox's quality control consultant has recommended that the Company maintain its current sampling procedures, laboratory method selection, and quality assurance protocol.

Drillhole 22MJ006 was the sixth drillhole along approximately 1.5km of strike of the Mustajärvi Shear Zone that penetrated more than 90 gram-metres of gold, expressed as grade – thickness. Most of these intervals have been reported from drill holes directed to the north-northwest, perpendicular to the Mustajärvi Shear Zone, because that has been shown to be an important controlling direction for the gold mineralization. In several instances, FireFox geologists have noted crossing structures that also appear to host significant alteration, veining, and gold. Thicker gold intercepts from the East Target during 2022 and 2023 indicate that structural intersections are very important in localizing and expanding the thickness of the mineralization.

After observing apparent cross structures in the drill core from the East Target, the FireFox team designed a drill program with 5 holes to test the alternative direction and explore for expansions of the new shallow high-grade zone. Drillholes 22MJ021, -22, and -23 were directed to the northeast instead of to the north-northwest, which has been the prevailing drill direction at Mustajärvi. Two additional holes (22MJ024 and -025) were drilled parallel to 22MJ006 to test for continuations of the high-grade zone to depth and to the southwest. The sixth hole was also aimed at testing for the cross structures, but at the Northeast Target, a few hundred metres away. All the holes in this Q4 2022 program were of modest depth, five of the six ranged between 100 and 160m depth, and one hole was drilled to 267m. The results were reported during the first quarter of 2023 (January 18 and February 15).

This drilling campaign in late 2022 turned out to be the most successful drilling campaign to date at the Mustajärvi Project (see Figure 9). Drill holes 22MJ021 - 22MJ025 resulted in the discovery of significant high-grade gold at depths of <30 metres below the surface. This shallow style of mineralization has been confirmed to include significant intervals of replacement-style mineralization, in addition to the vein-style of gold noted previously at Mustajärvi. This is important because gold associated with replacement-style mineralization is linked to disseminated to semi-massive sulphides and silicification that affect larger volumes of rock than vein related gold. These results also successfully confirmed lateral continuity of the shallow mineralization over more than 50 metres. These thicker and more continuous zones of mineralization are associated with structures that crosscut the main Mustajärvi Shear Zone. In addition to the near surface high-grade mineralization, there was also deeper high-grade gold mineralization in hole 22MJ024, such as 3.4m of 50.91 g/t Au, including 1.0m at 170.67 g/t Au from 91.8m downhole depth. This deeper bonanza zone confirms the continuation of the mineralization towards the northwest, and it may be on strike and related to similar intercepts in 22MJ006 and 22MJ022. There were numerous other narrow intercepts of gold mineralization at depth that remain open.

Highlights of the fall 2022 drilling campaign reported in Q1 2023 include:

- 15.5m at 13.09 g/t gold from 11.0m depth in 22MJ021
- 7.2m at 16.43 g/t gold from 22.8m depth in 22MJ022
- 13.05m at 15.04 g/t Au from 29.6m depth in 22MJ024
- 12.55m at 14.34 g/t Au from 14.3m depth in 22MJ025

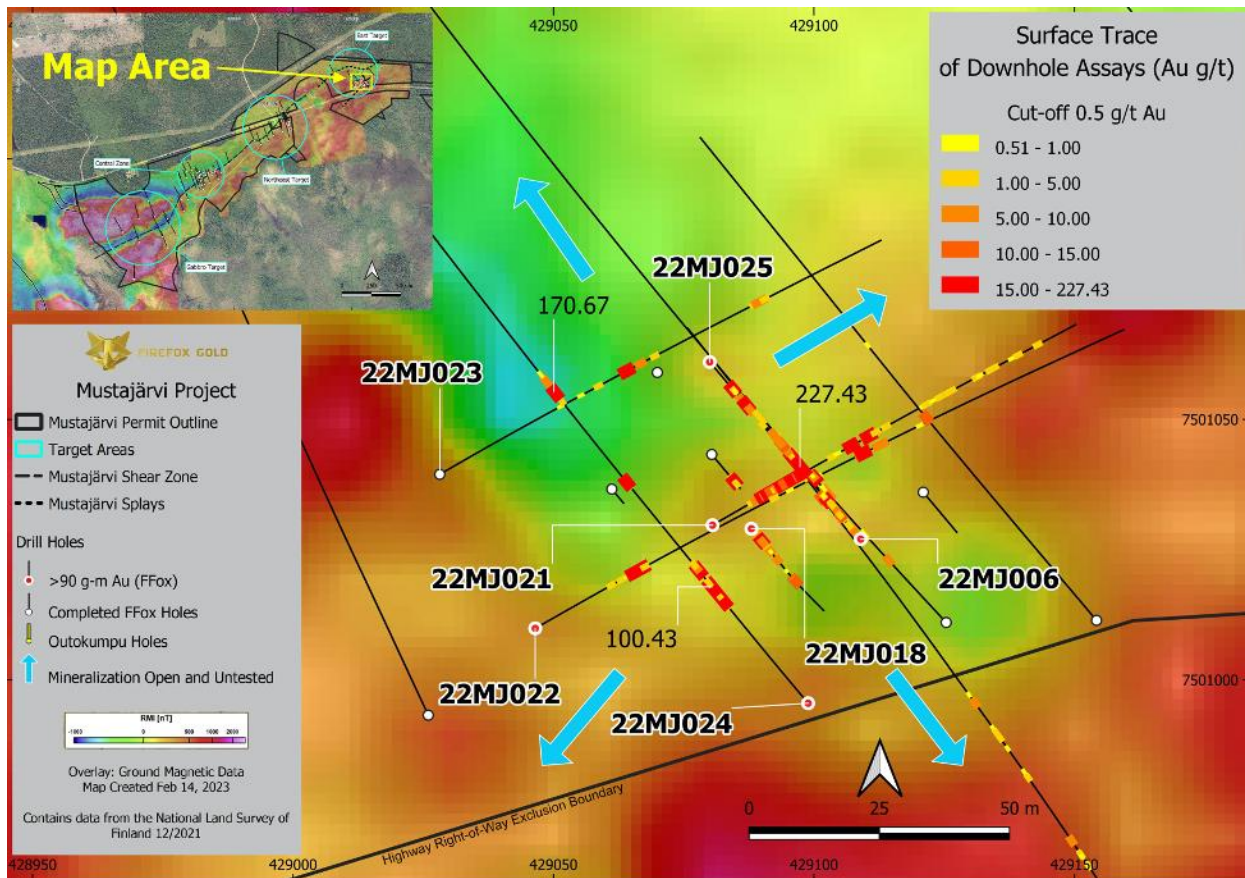


Figure 9. Mustajärvi East Target map with Q4 2022 drilling over ground magnetics

Deeper mineralization was also intersected with drill hole 22MJ025, which was drilled with an azimuth of 140° towards the interpreted contact between Sodankylä group metasedimentary rocks and the Savukoski group mafic-ultramafic volcanic unit (Figure 10). At 177.6 metres downhole, gold mineralization was intersected just beneath a long interval of strongly mylonitized and intensely altered metasediments, interbedded with mafic volcanics. Here the gold is associated with narrow quartz-tourmaline veining and fine-grained disseminated pyrite. FireFox geologists believe that the mylonite may indicate proximity to a sheared contact zone between the siliciclastic metasediments and ultramafic volcanic rocks. Even though the frequency of narrow gold intercepts was increasing with depth, the drill hole did not reach the contact. The last mineralized interval in this hole was sampled from 3.7 metres above the end of the drill hole, starting at a depth of 263 metres, and returning 2.0m averaging 1.14 g/t Au. The mineralization remains open to depth.

In the second quarter of 2023, the Company received multielement geochemical analyses on the drill core from the fall 2022 drilling campaign. The most recent data are consistent with previous results from Mustajärvi drilling; the gold mineralization is consistently enriched in bismuth (Bi), tellurium (Te), molybdenum (Mo), selenium (Se), nickel (Ni), and cobalt (Co). Silver (Ag), arsenic (As), and copper (Cu) occur at relatively low levels at Mustajärvi. Cobalt is quite enriched at the East target, reaching maximum values of 0.497% and 0.461% over separate 1 metre samples in the 2022 drilling. Drill hole 22MJ021 recorded the strongest cobalt interval yet drilled, along with one of the best gold results as well (see Company news release dated January 18, 2023): 15.5m at 13.09 g/t Au, 0.15% Co, and 143 ppm Te from 11.0m depth, including 6.5m at 19.18 g/t Au, 0.27% Co, and 247 ppm Te from 20.0m depth.

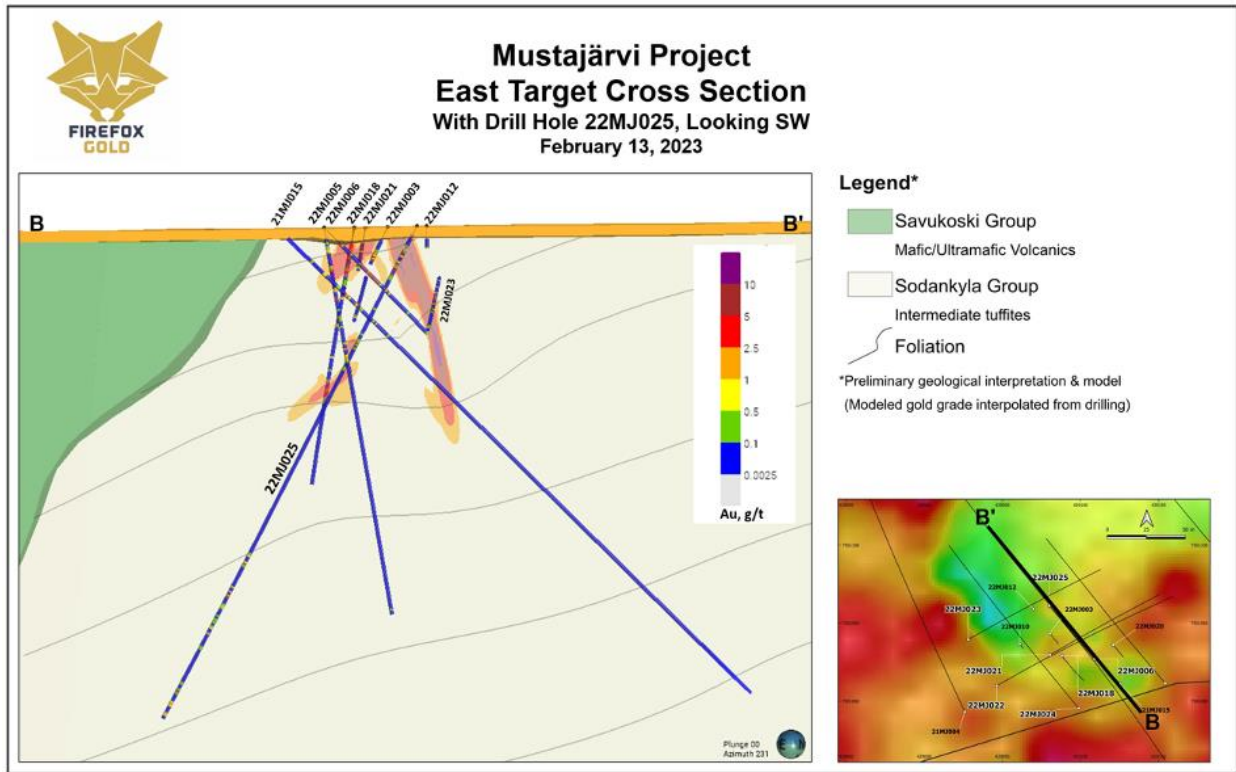


Figure 10. Mustajärvi East Target Cross Section B-B' Looking Southwest

Firefox Gold returned to diamond drilling at the Mustajärvi Project during Q2 2023. The Company drilled 9 diamond core holes totaling 1540.6 metres during the short program. These drill holes were designed to infill gaps in the modelled near-surface gold shapes and test for significant extensions to the west and southwest (see Figure 11). The new holes included close offsets and downdip tests of the replacement style gold mineralization drilled in the East Target, but the drilling also included major step-outs of 80m and 215m along strike to the southwest. The spring 2023 drilling was focused on the East Target with a primary goal to extend known, shallow high-grade mineralization.

All of the successfully completed drill holes (8) yielded significant gold mineralized intervals, extending the East Target mineralization to the west, southwest, and southeast. Most remarkably, the major step-out of 215m along strike towards the southwest was a success, confirming the potential for expansion of the target in this direction.

Highlights of the spring 2023 drilling campaign (reported in Q3 2023) include:

23MJ001

- 11.95m averaging 9.69 g/t Au from 5.4 metres down hole (includes 0.3 metres of core loss).
- 5.35m averaging 8.09 g/t Au from 37.25 metres down hole.

23MJ002

- 7.35 m averaging 2.40 g/t Au from 60.0 metres down hole.
- 9.00 m averaging 1.06 g/ Au from 103.0 metres down hole.

FIREFOX GOLD CORP.*Management Discussion and Analysis*

September 30, 2023

23MJ003

- 9.50 m averaging 2.08 g/t Au from 155.5 metres down hole.
- 2.45 m averaging 15.22 g/t Au from 248.65 meters down hole.

23MJ004

- 20.45 m averaging at 5.14 g/t Au from 12.0 metres down hole.
- 14.8 m averaging 6.00 g/t Au from 54.0 metres down hole.

23MJ005

- 4.20m averaging 5.74 g/t Au from 60.8 metres down hole.
- 7.05m average 4.77 g/t Au from 68.0 metres down hole.

23MJ007

- 3.7 metres averaging 3.17 g/t Au from 52.0 metres down hole.

23MJ008

- 2.0 m averaging 4.75 g/t Au from 29.0 metres down hole.
- 7.0 m averaging 1.77 g/t Au from 112.0 metres down hole.

23MJ009

- 5.55 m averaging at 4.45 g/t Au from 75.55 metres down hole.

The central part of the East Target shows as a core zone of very high-grade gold that comes to surface and is elongated in the NE-SW direction. This shape has an apparently gentle dip to the southwest. It has been tested with drilling in multiple directions because it hosts both replacement-style gold-pyrite mineralization controlled by foliation and high-angle QCTP veins at various orientations. Figure 12 is a preliminary cross section, oriented NW-SE and looking to the southwest.

There appear to be brittle faults that cut the Mustajärvi East deposit, and these are interpreted to be late (post-mineral). One significant fault strikes northeasterly and may cut off the surface deposit and downdrop part of the mineralization to the south. The geometry remains complex, but intercepts in holes 22MJ025 and 23MJ003 appear to have cut high grades that suggest more mineralization at depth in that direction. This relationship can be seen in multiple cross sections, but it is well expressed in Figure 13, another NW-SE preliminary cross section that includes 22MJ025 and 23MJ003.

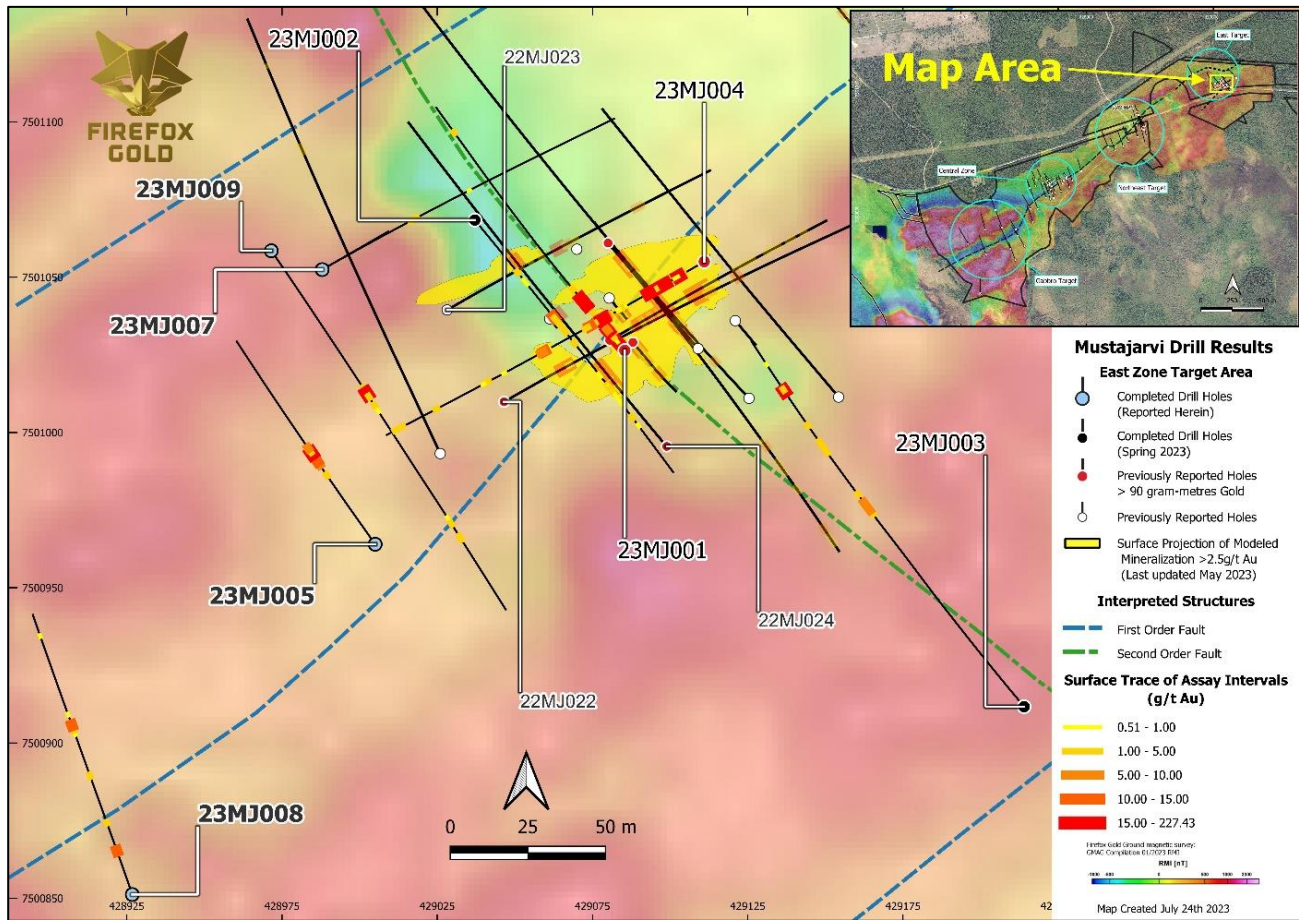


Figure 11. Mustajärvi East Target map with drilling up to the end of Q2 2023 over ground magnetics

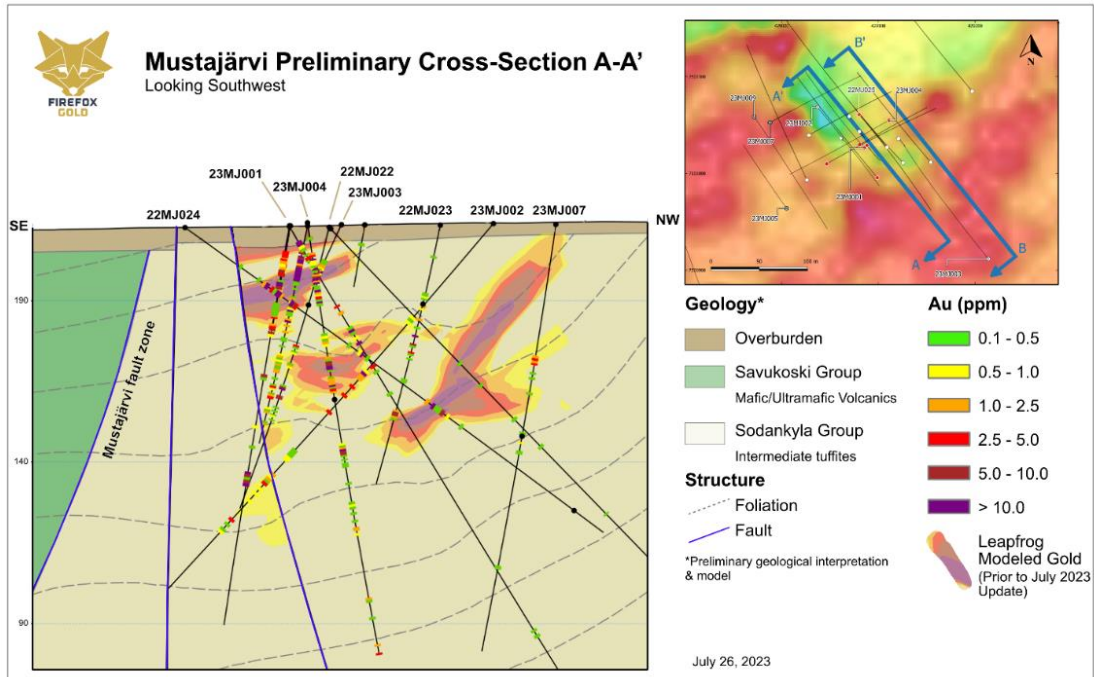


Figure 12. Preliminary Cross Section through East Target Looking SW (23MJ001 and 002)

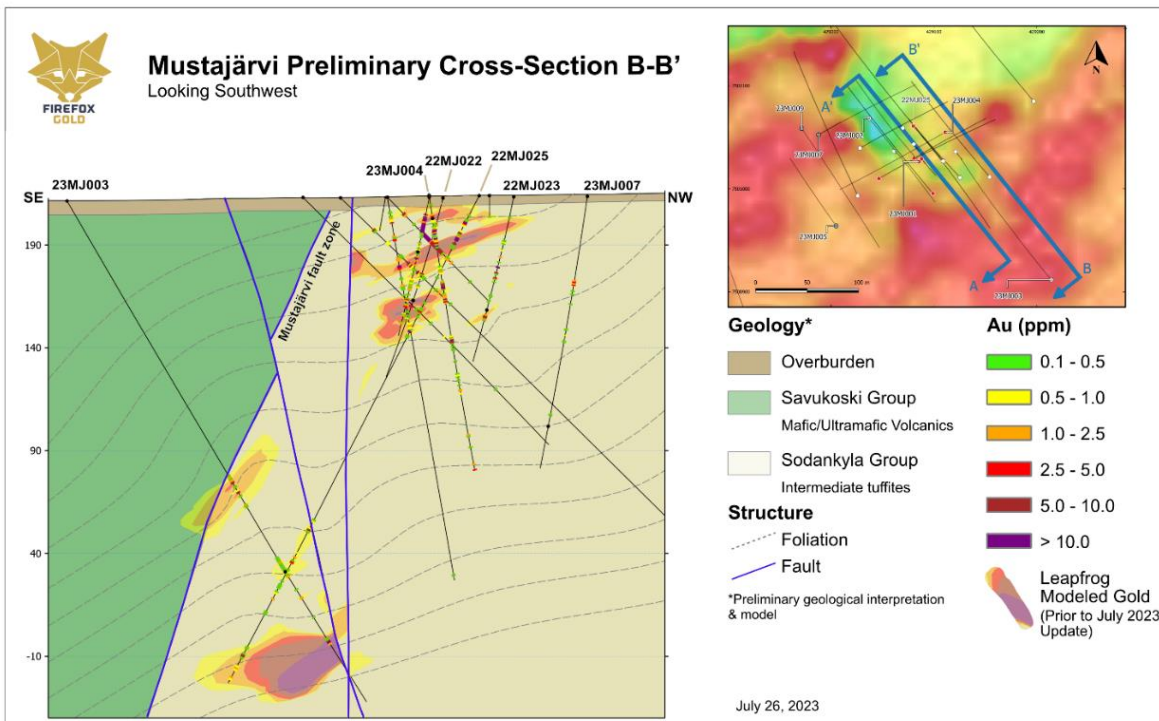


Figure 13. Preliminary Cross Section through East Target Looking SW (22MJ025 and 23MJ003)

FIREFOX GOLD CORP.

Management Discussion and Analysis

September 30, 2023

Firefox conducted a limited test trenching campaign over the surface expression of the East Target in early July of 2023. Two test trenches were excavated at the East Target to evaluate conditions for possible additional trenching, gather structural information about foliation, veining, and faulting, and to sample the surface exposure of the system. In order to minimize cost and environmental impact, the test was conducted in an easily accessible area with no forest cover. The trenches were excavated close to the location of the surface projection of shallow gold intersections from drill holes 23MJ001, 23MJ004 and 22MJ022. The first trench revealed bonanza grade gold mineralization including 6.87 metres that averaged 59.12 g/t Au on the basis of uncut results from 1-kilogram screen fire assays (Figure 14).

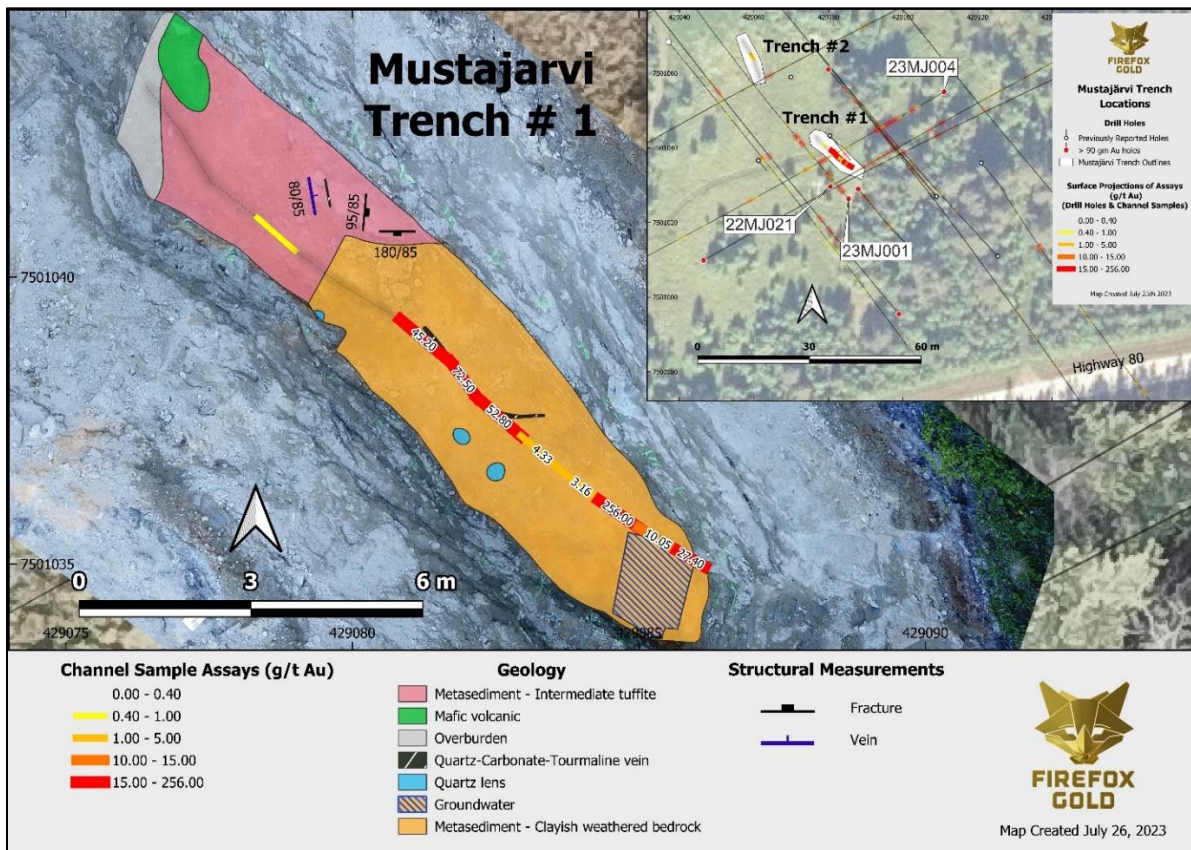


Figure 14. Mustajärvi East Target Exploration Trench Locations and Trench 1 Details

Location of the Trench 2 presented in the inset map

Trench 1 exposed weathered intermediate tuffites with minor interbedded mafic volcanics. From 4.5 metres to the end of the trench at 13 metres, the exposed bedrock is intensely altered and weathered intermediate tuffites, in which original textures are largely destroyed as it has been altered and weathered to orange-red clay. There are isolated relict quartz-tourmaline veins and veinlets, as well as cubic casts of abundant iron oxide after pyrite. Much of the red and orange colour is likely the result of oxidation of large amounts of pyrite, so the exposure may be called a gossan in places. Channel sampling of Trench 1 returned high-grade mineralization in multiple contiguous samples, including 6.87 metres that averaged 59.12 g/t Au on an uncut basis. Individual bonanza grade samples in the interval include: 0.84m at 256 g/t Au, 0.77m at 72.5 g/t Au, 1.02m at 52.8 g/t, and 1.15m at 45.02 g/t Au. The high-grade gold mineralization is hosted in supergene clay material (altered and weathered bedrock) with relicts of quartz-tourmaline veins and minor veinlets. Locally, tourmaline comprises

FIREFOX GOLD CORP.

Management Discussion and Analysis

September 30, 2023

massive clots up to 20 cm in size. The mineralization exposed in the trenches was thoroughly oxidized, and this supergene process may locally enrich gold grades relative to fresh rock. More work will be required to ascertain the degree (if any) of supergene enrichment.

Trench 2 was located approximately 20 metres to the northwest of Trench 1 (Figure 14, inset map). It successfully exposed pristine bedrock with well-preserved structural features and common quartz-tourmaline-pyrite veinlets. Most of exposed veinlets were aligned either NE-SW (close to EW) or NW-SE. The exposed bedrock was composed primarily of weathered tuffites and other metasediments with lesser interbedded mafic volcanics. While gold was highly anomalous in much of Trench 2, only one of the channel samples exceeded 0.5 g/t Au, that sample contained 2.92 g/t Au over 1.56m. In addition, the team collected six rock chip samples from the trench, apart from the channel sampling, one of which contained 15 g/t Au.

The results of the 2023 program at Mustajärvi will drive follow-up drilling, trenching, and metallurgical work during 2024. The East Target remains open to the southwest and northeast, as well as downdip across the faults on the south. The successful test trenching also highlights the value of learning more about the extent of the high-grade surface expression of the system. The Company will update and announce its plans during Q1 of 2024.

Kolho Trend, Naula, Nunara, Manto properties and the Seuru Option

On August 21, 2018, the Company entered into an option agreement with Magnus (the “Seuru Option Agreement”) to acquire a 100% interest in approximately 46,039 hectares of mineral exploration reservations in the Central Lapland Greenstone Belt of northern Finland. At the time of the option, the new properties were comprised of four separate reservations, collectively referred to as the Seuru Properties. Since originally entering into the option agreement, certain extensions to commitment dates have been formally granted by Magnus under the Seuru Option Agreement. Magnus will retain a 1.5% NSR on production from the Seuru Properties, 0.5% of which can be purchased for 1,000 troy ounces of gold.

Pursuant to the Seuru Option Agreement, FireFox has completed the following commitments and fully exercised its option:

- (i) issued 1,500,000 shares,
- (ii) made cash payments to Magnus totaling \$200,000, and
- (iii) incurred \$2,292,092 in mineral exploration on the Seuru Properties

Some of the original Seuru Group of properties have been evaluated and dropped, but the Sarvi and Lehto Properties remain very active, as the Company was granted exploration permits at both properties in August 2021.

The Sarvi Project is located along the northern boundary of Rupert Resources’ Area 1 discovery. Early work returned a heavy mineral sample with 118 gold micro nuggets (also elevated Au and As values in till geochemistry) resulting in the planning for continued exploration.

The Lehto exploration permit is located 9 kilometers north of Sarvi. The area comprises a very similar rock package to the Sarvi area, but in addition to Kittilä Suite mafic tholeiites and mafic graphite tuffs, oxide facies iron formations have been reported. Limited field work has been completed, but several anomalous samples have been collected so far, including rock samples with 1.1% Cu and 0.538 g/t Au from quartz veins cutting mafic volcanics.

FireFox has expanded its holdings in the vicinity of the Seuru properties by applying for additional new exploration reservations in its own name. The current coverage and status of exploration permit applications and exploration permits of this northern group of projects is shown in Figure 15. A considerable portion of these overlap with properties governed by the conditions of the Seuru Option Agreement; hence, the Magnus NSR and its conditions will apply to certain of these properties if production is achieved, including the valid permits at Sarvi and Lehto.

In 2020 geologists collected 425 outcrop and boulder grab samples from Sarvi and Lehto. During the third quarter of 2020,

FIREFOX GOLD CORP.

Management Discussion and Analysis

September 30, 2023

the company commissioned a detailed UAV-magnetic survey over the Sarvi and Sarvi2 area and the Keula Reservation covering roughly 21 km².

Early in 2021, FireFox conducted a ground magnetics survey at Sarvi in preparation for the next phase of field work. The team conducted additional geophysics and mapping campaigns in the Northern Group properties during Q3 2021.

In August 2021, FireFox accelerated its exploration at Sarvi with mapping, BOT sampling, and trenching. By the end of March 2022, the team had collected a total of 1,575 BOT samples and excavated 10 exploration trenches with total linear length of 479 metres. Trenching sites were located primarily based on arsenic anomalies that were previously discovered by FireFox reconnaissance BOT sampling. The team sampled the trenches both as channel samples of exposed bedrock in the center of excavated trenches and by random grab sampling. In total 169 channel/chip samples and 74 grab samples were collected.

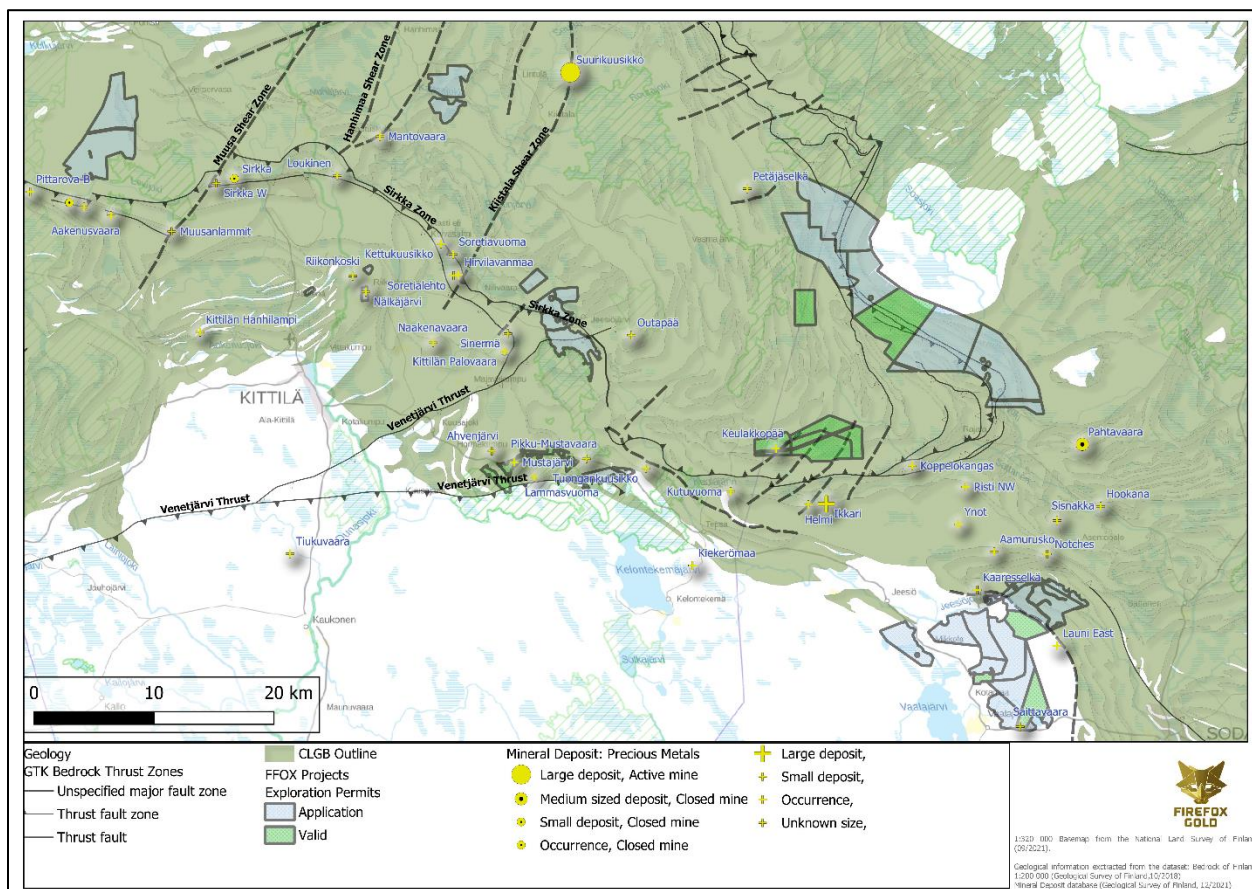


Figure 15. Current FireFox Properties in Lapland, starting from left: Naula, Manto, Mustajärvi, Nunara, Sarvi, Kolho Trend and Jeesiö

The trenching campaign exposed a volcano-sedimentary unit over the north-western part of the Sarvi area and some of the trenches yielded significantly elevated gold and pathfinder element values. Trenches intersected three main lithologies: graphitic schist with variable intensity of graphitization, mafic volcanic rocks, and weathered sediments (always strongly graphitic). Anomalous gold values (>0.1 ppm Au), accompanied by other pathfinder elements, were detected in samples from trenches ST21-1, ST21-3, ST21-6, and ST21-7.

FIREFOX GOLD CORP.

Management Discussion and Analysis

September 30, 2023

In general, most anomalous gold samples were hosted within graphitic schist. The more mineralized rocks often exhibit disseminated and rare veinlets of pyrite (sometimes oxidized) and may include disseminated pyrrhotite, silicification, and quartz-carbonate veining. The highest gold assays were intersected in trench ST21-1, averaging 0.23 g/t gold over 18 metres (including 10 metres averaging 0.31 g/t gold). Gold mineralization in this area is hosted within graphitic schist. The anomalous gold samples also included elevated Ag, As, Mo and sometimes Cu and Zn. The gold-rich interval in trench ST21-1 was tested by the initial drill hole of the maiden Sarvi drill program, which commenced in early 2022.

The first stages of work at Sarvi demonstrated geology consistent with an earlier interpretation from regional data that a package of tholeiitic basalt, mafic (graphite) tuff, and banded iron formation that underlies the northwestern portion of the project is likely to be part of the Porkonen Formation. The Kiistila Shear Zone, which hosts Agnico Eagle’s Kittilä Mine, cuts through the Porkonen Formation to the northwest from the Sarvi Project. The contact zone with the Porkonen Formation and related shearing may be a very prospective target zone. Much more work remains on this part of the project.

FireFox Gold started its first diamond drilling campaign at Sarvi in early January of 2022. During the first four months of 2022, the Company drilled 12 diamond drill holes for a total of 2,327.8 metres (Figure 16). The drill holes were widely spaced as the first drill tests of anomalies in BOT geochemistry, interpreted structural and geophysical features, or follow-up on the small-scale trenching campaign. The Company released results for the first five holes in the northwest portion of the original Sarvi permit on May 27, 2022, and the final results on July 13, 2022.

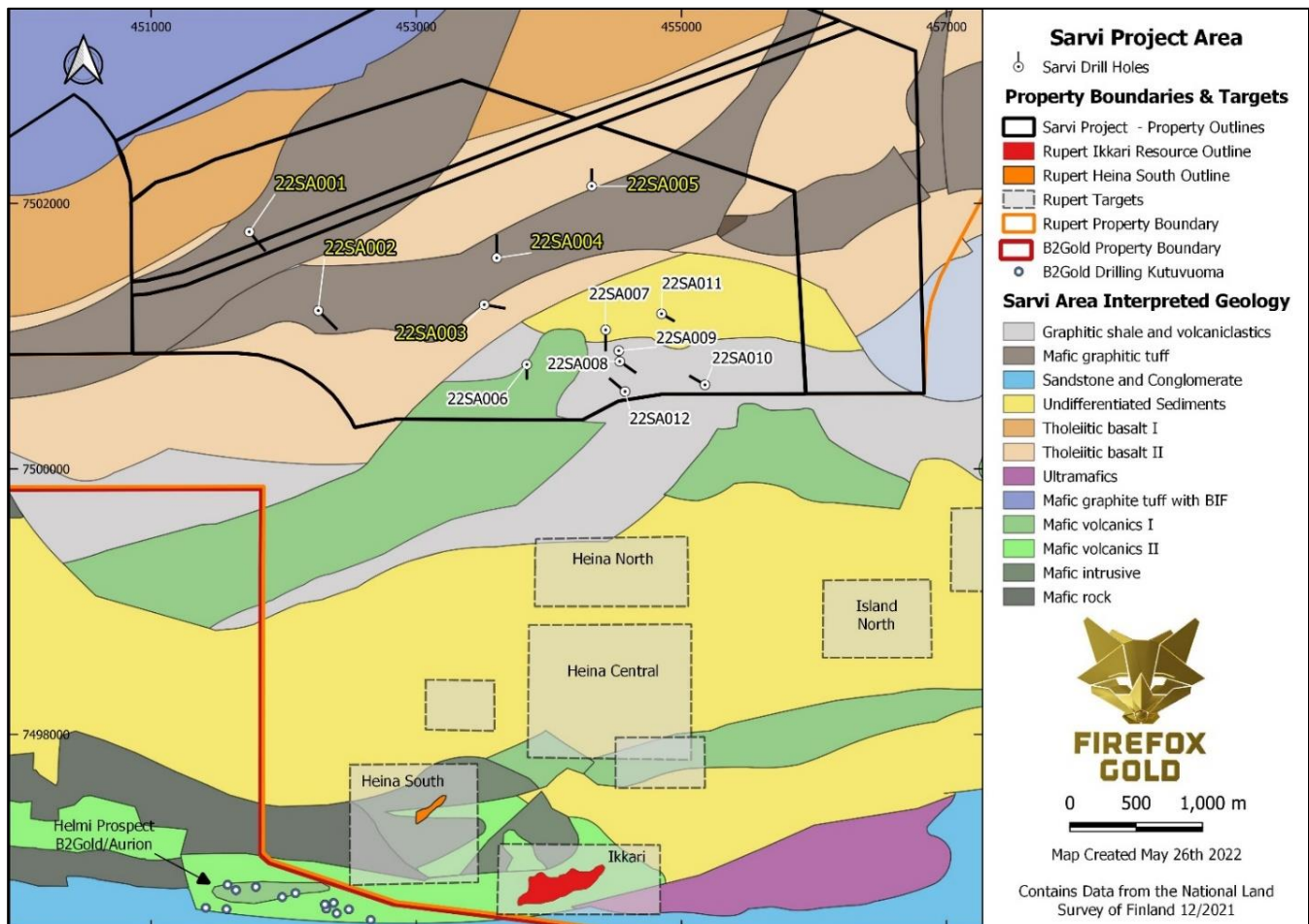


Figure 16. Initial reconnaissance drilling and interpreted geology at the Sarvi Project

FIREFOX GOLD CORP.*Management Discussion and Analysis*

September 30, 2023

While the initial drill results from Sarvi included only limited anomalous gold and silver, the Company announced significant progress in its geological understanding of the property and its targets. The best intercept reported during the maiden program was 17.0m at 0.134 g/t Au from 111.0m downhole depth, which was part of a thicker interval of high silver (25.5m at 1.94 g/t Ag) in drill hole 22SA001. This intercept along and its associated anomalies in As, Sb, Bi, Te, Cu, Mo, and Zn confirmed downdip continuation from the anomalous trench results. This mineralization is associated with occasional semi-massive to massive pyrrhotite (lesser pyrite) within graphite-bearing tuff and schists in the upper portion of the hole. This style of mineralization appears to be exhalative in nature, and the exhalite horizons are sometimes cut by iron-carbonate veins and stockworks. This intercept and the nearby mineralization in the trenches remain open in all directions.

The second reconnaissance drill program at Sarvi Project commenced in Q2 2023. This drilling campaign included four drill holes (23SA001-23SA004), totaling 611 metres. These holes were designed to test a combination of geochemical anomalies (till and rock sampling) and structural/geological targets (Figure 17). The drilling was not successful in identifying high-grade gold, but the drill holes did encounter quartz-carbonate (tourmaline) veining with sulphides, as well as sulphide-bearing carbonaceous sediments above a contact with mafic volcanic rocks. The most important finding from this phase of drilling is that the mudstones and black shales at Sarvi are likely the best hosts for gold, silver, and base metal mineralization. This is consistent with previous drilling on the property completed by the Geological Survey of Finland (GTK) in 2009. The preliminary interpretation is that these intercepts occur in similar metasedimentary rocks to those hosting low-grade gold, silver, and base metals elsewhere at Sarvi. This geological unit appears to extend across the Sarvi permits, creating target settings on which to focus future exploration where this metal rich stratigraphy is cut by late-stage faulting.

The project remains at a very early stage; however, the geological understanding has been advanced through a compilation of detailed magnetics from both drone-based and ground surveys combined with almost 1,600 BoT samples and a total of 2,938.8 metres of drilling. Much of the property is covered by glacial sediments, so outcrop is rare, but the technical team has identified a number of structures and lithologic contacts as targets based on detailed magnetics data. During the latter half of 2023 at Sarvi, FireFox reviewed the GTK drill holes (from 2009) from the Keulakko prospect (GTK drill holes in Fig. 17), extended the detailed ground magnetic survey to the west and northeast, and commenced a bedrock and boulder sampling and mapping campaign. The results of the pending samples are expected during winter of 2023 - 2024.

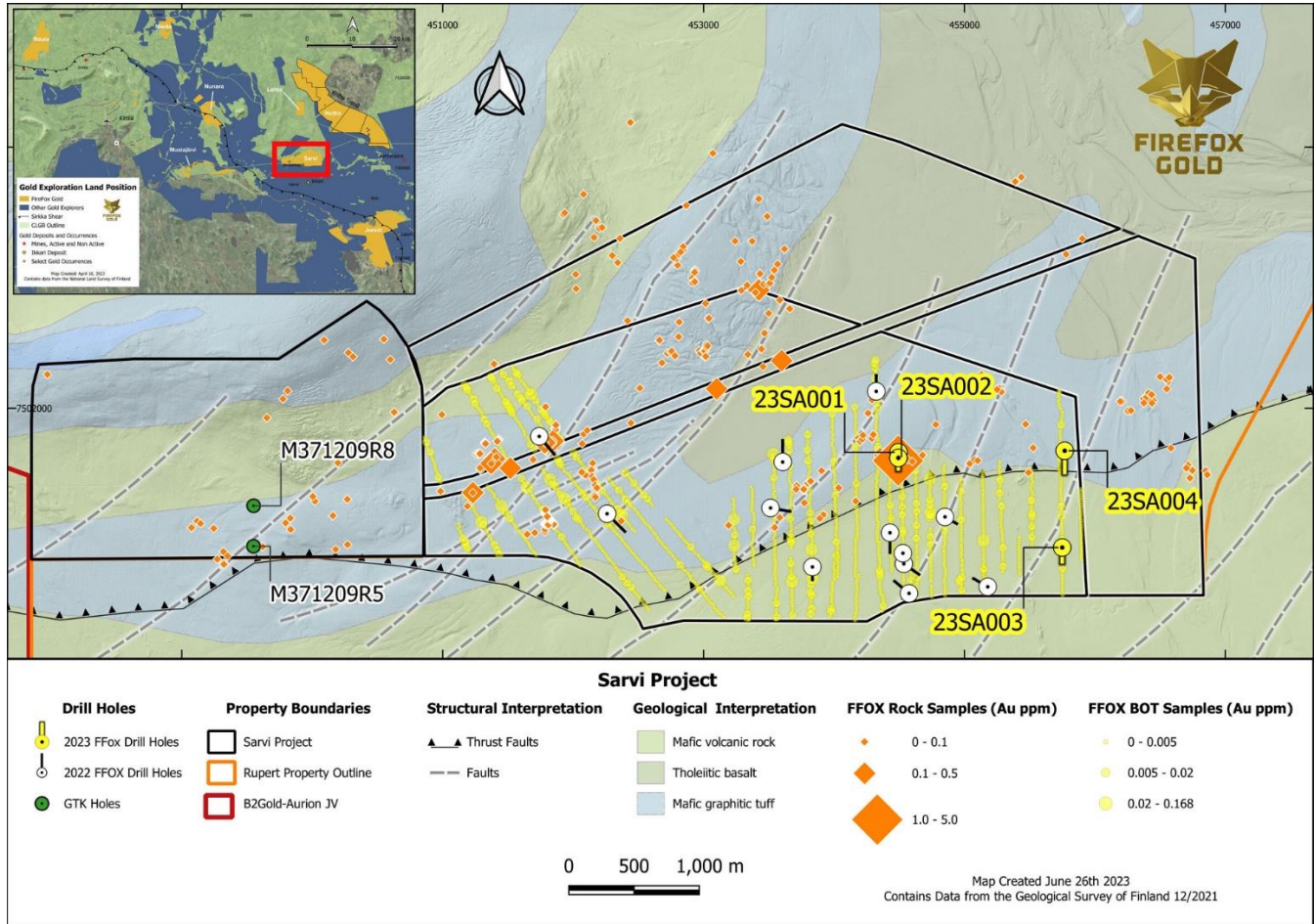


Figure 17. Sarvi Project: Drill Holes, BoT, and Rock Samples Over Geology

Elsewhere in the Northern Group, FireFox conducted the first part of the planned UAV magnetic survey campaign at the end of July 2021 covering approximately 85 km² over the northern part of the Kolho, Kuussatta, and Lehto 2 reservation areas and the Lehto exploration permit area (Figure 18, area labeled as 1). The separation between the EW-directed flight lines and the perpendicular tie-lines was 50 m and 500 m, respectively. According to the flight plan, the total length of the 271 flight lines and 20 tie-lines was about 1,732 km + 174 km. The nominal flight altitude was 37.5 m above ground level.

The second survey of approximately 55km² was completed on September 27, 2021, covering the southern portion of the area, and linking to the Sarvi Project on the south (Figure 18, area labeled as 2). The design and flight parameters of the second survey were the same as the first survey. According to the flight plan, the total length of the 181 flight lines and 23 tie-lines was about 1,122 km + 112 km. The third part of the large UAV Magnetics survey program was finished in Q1 of 2022, covering about 79 km². The separation between flight lines and the perpendicular tie-lines was 50 m and 500 m, respectively. According to the flight plan, the total length of the 214 flight lines and 31 tie-lines totaled 1,770 surveyed kilometres. FireFox reported its next steps at the huge Kolho Trend in a news release dated May 12, 2022.

The Company now has over 250km² of contiguous magnetics survey data for the area, conducted by Radai. Further structural interpretations for the geophysical survey data were conducted by the technical team from GoldSpot Discoveries Corp. ("GoldSpot", now ALS GoldSpot Discoveries Ltd., a part of the ALS Minerals group).

FIREFOX GOLD CORP.

Management Discussion and Analysis

September 30, 2023

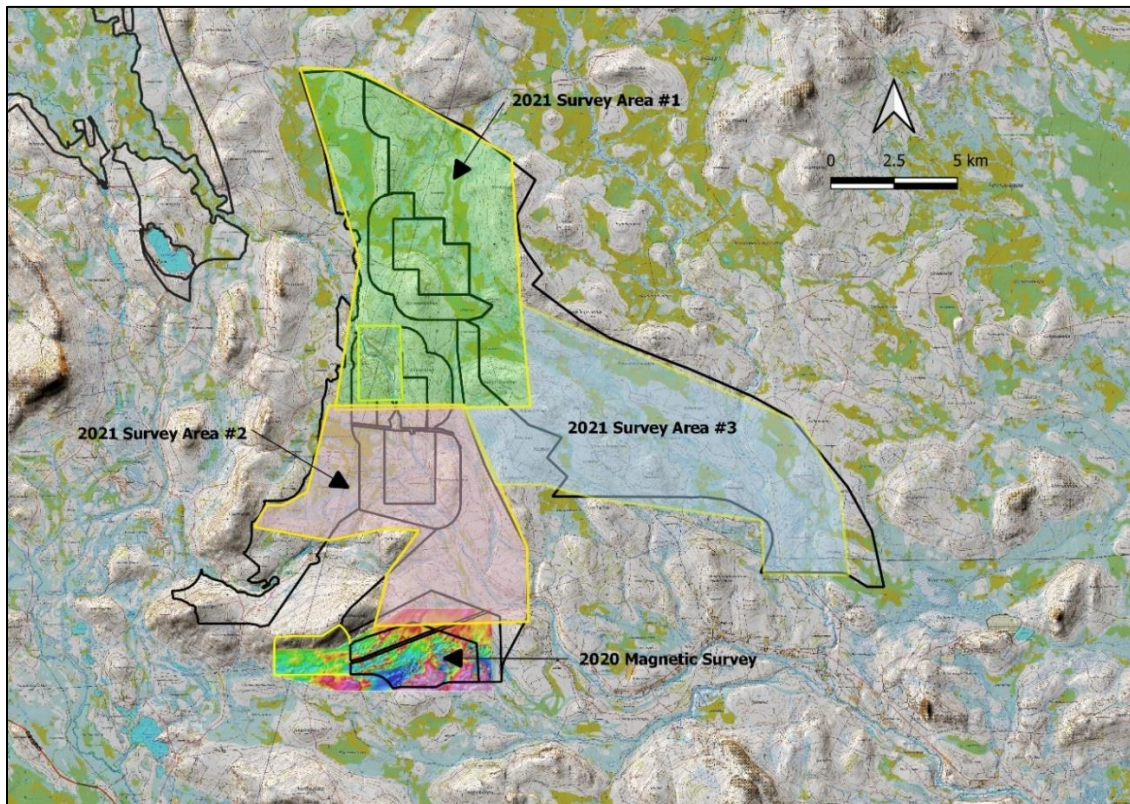


Figure 18. UAV magnetic survey areas at the Northern Group Gold Properties to Q1 2022

The Kolho Trend (Figure 19) includes a series of permit applications and one valid permit covering a large area along a major geologic break – the eastern contact between the Kittilä suite and Savukoski group rocks. This contact is a major thrust verging to the east, towards the Sodankylä group quartzites and the Archean Pomokaira complex (granodiorites and tonalite gneisses). This trend is formed by a 23-kilometer-long thrust zone, which the Kolho properties straddle.

The Kittilä suite rocks are bordered by the Sodankylä and Savukoski group rocks in the east, and elsewhere by various types of granitoids. The Kittilä suite comprises volcano-sedimentary remnants of an oceanic island arc and an ophiolitic rim obducted onto passive margin terranes later intruded by post collisional granites. The Kolho Trend is structurally complex and hosts a lithologic package analogous to that seen at Rupert Resources' Area 1, which is a high-priority exploration model for all Lapland explorers.

Further data interpretation revealed multiple areas where these prospective lithologies are either significantly folded or cross-cut by several interpreted structures. The more detailed data also revealed previously unmapped structures in the area. The Company has identified several potential targets to the north and northeast of Sarvi. The large area of Kolho Trend properties covers a number of key targets. Figures 19 and 20 show several potential target areas that are based on analogies to the setting at Rupert's Ikkari discovery or Agnico Eagle's Kittilä Mine. Firefox commenced a brief mechanized reconnaissance BoT-Survey at the newly valid Nuttio exploration permit during Q2 2023. The campaign lasted slightly over one week, as it had to be terminated due to rapidly rising spring temperatures and thawing of the frozen ground. The team collected only 95 till samples. Firefox commenced reconnaissance structure and bedrock mapping at the Kolho Trend area during the field season of 2023.

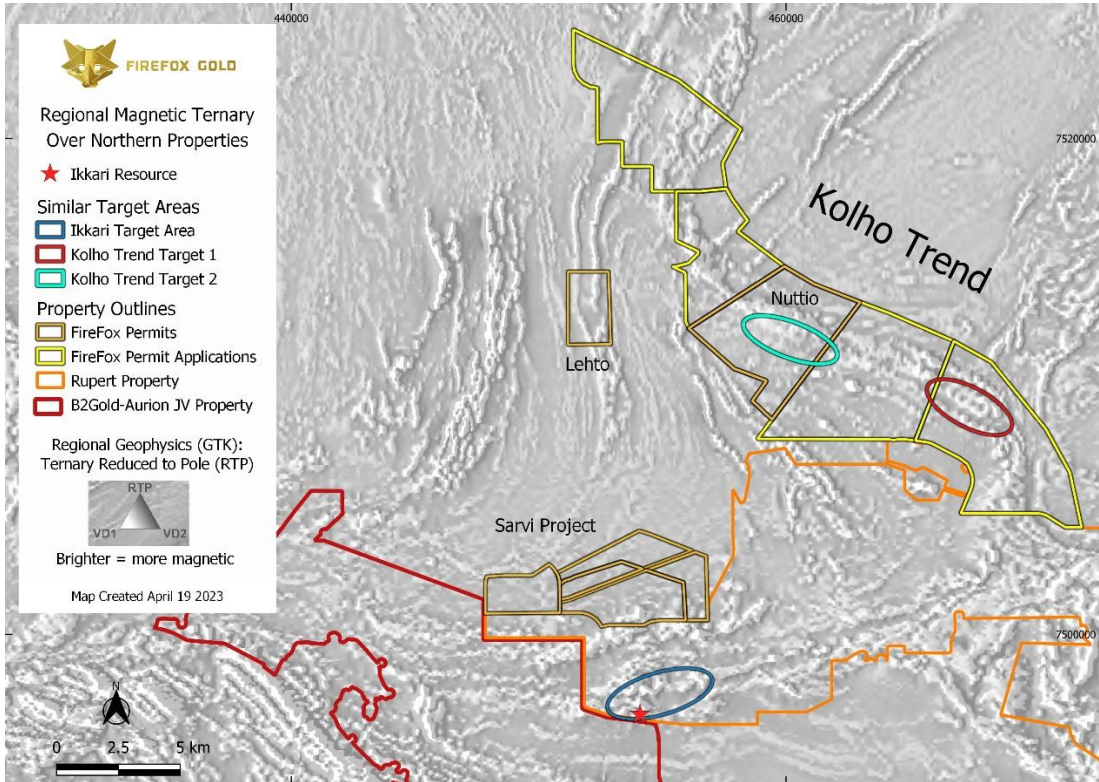


Figure 19. Regional magnetics with new targets at Kolho Trend

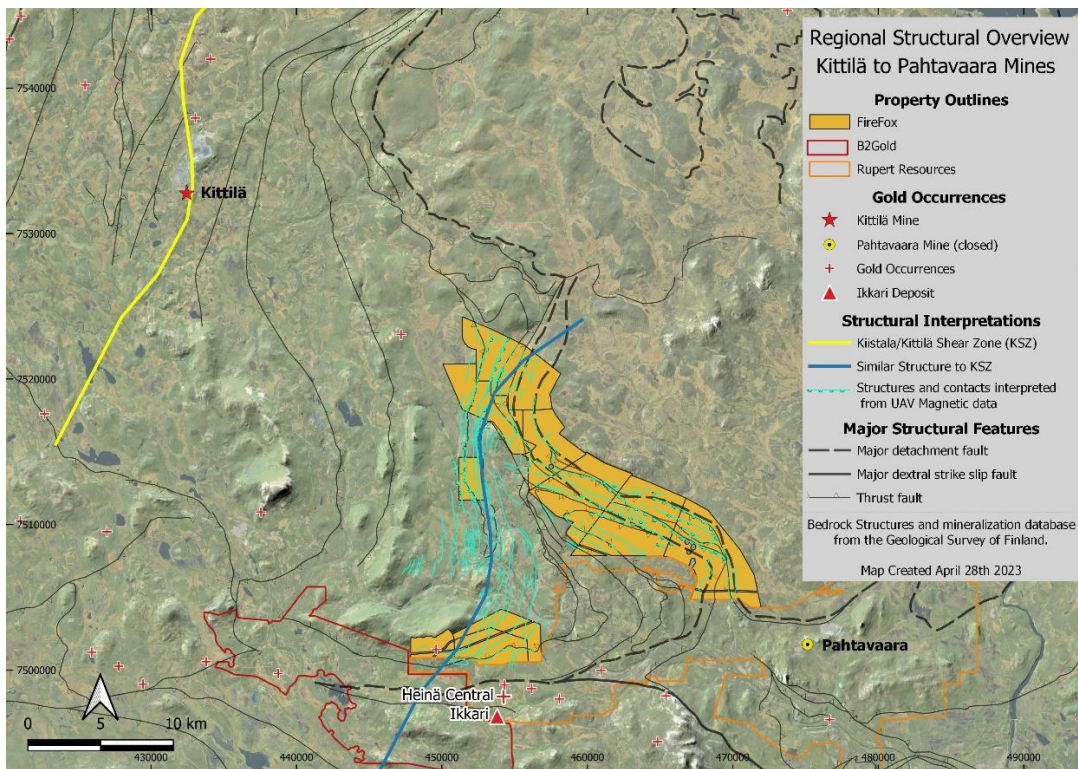


Figure 20. Regional structural overview through Northern Properties

FIREFOX GOLD CORP.

Management Discussion and Analysis

September 30, 2023

During Q4 of 2022, FireFox's exploration reservation areas Mantovuoma (VA2020:0085), Lehto 2 (VA2020:0051), Kuussatta (VA2020:0084) and Paartoselkä (VA2020:0086) expired. Firefox submitted 3 new exploration permit applications to secure and gain access for further mechanized exploration work on the most prospective parts of the areas, which were previously under the status of exploration reservations (Figure 21).

Exploration permit application Kuussatta (ML2022:0086) was submitted in late November of 2022 and it will add 14.7 km² of prospective land along the Kolho Trend. Exploration permit application Sikavaara N (ML2022:0087) covers land over the interpreted Sirkka Shear Zone and along the northern side of it at the Nunara Project area, increasing the total area of Nunara permits to 16.46 km². Exploration permit application Palvasenvuoma (ML2022:0085) covers 9.56 km² and is located within the central area of the mafic volcanic dominated Kittilä suite. Previous exploration work conducted by the GTK during 2005-2006 reported a N-S trending anomalous zone with maximum gold values in till of 11 ppm within the recently submitted Palvasenvuoma permit application. Firefox commenced a brief bedrock and boulder mapping and sampling campaign in the Nuanara area during the Q3 of 2023, results of these samples are expected during winter 2023 – 2024.

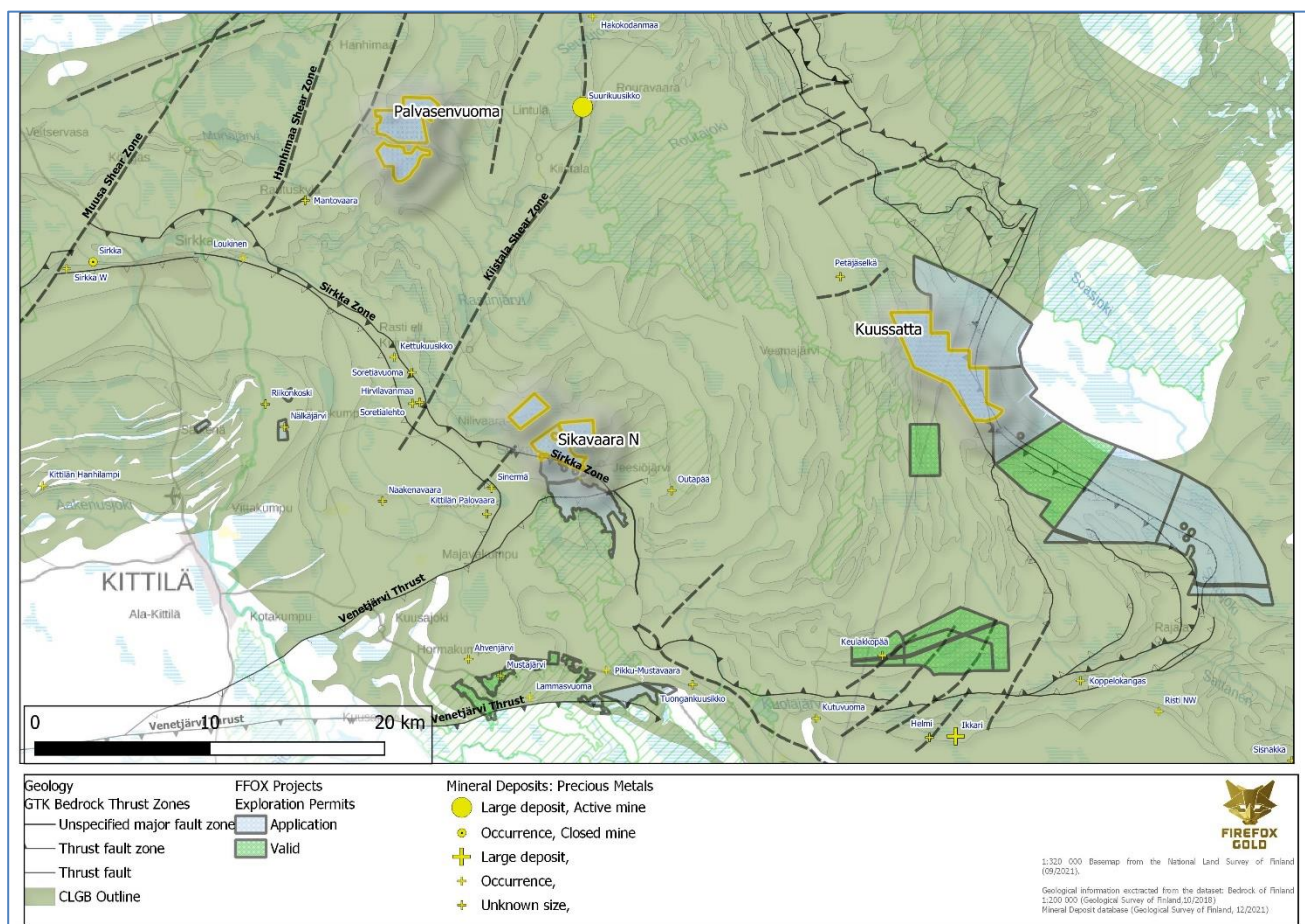


Figure 21. Exploration Permits Sikavaara N, (Nunara project,) Palvasenvuoma (Manto project) and Kuussatta (Kolho Trend) highlighted over the general overview of the FireFox Gold land position in the central part of the CLGB

FIREFOX GOLD CORP.

Management Discussion and Analysis

September 30, 2023

The 100% controlled Naula Project lies in the western portion of the CLGB, just north of the Sirkka Shear Zone (SSZ). Naula has recently advanced from an exploration reservation to a new project with permit applications covering approximately 26 km².

The geology of the area is comprised of the Kittilä suite volcanics, which is dominated by tholeiitic mafic flows and graphite bearing mafic tuffites. This volcanic complex is host to Agnico Eagle's Kittilä gold mine, located 37 kilometres to the east-northeast. The southern boundary of the project area is located less than 2.5 kilometers north from the SSZ, which hosts the nearby historic Saattopora gold mine and numerous other gold deposits.

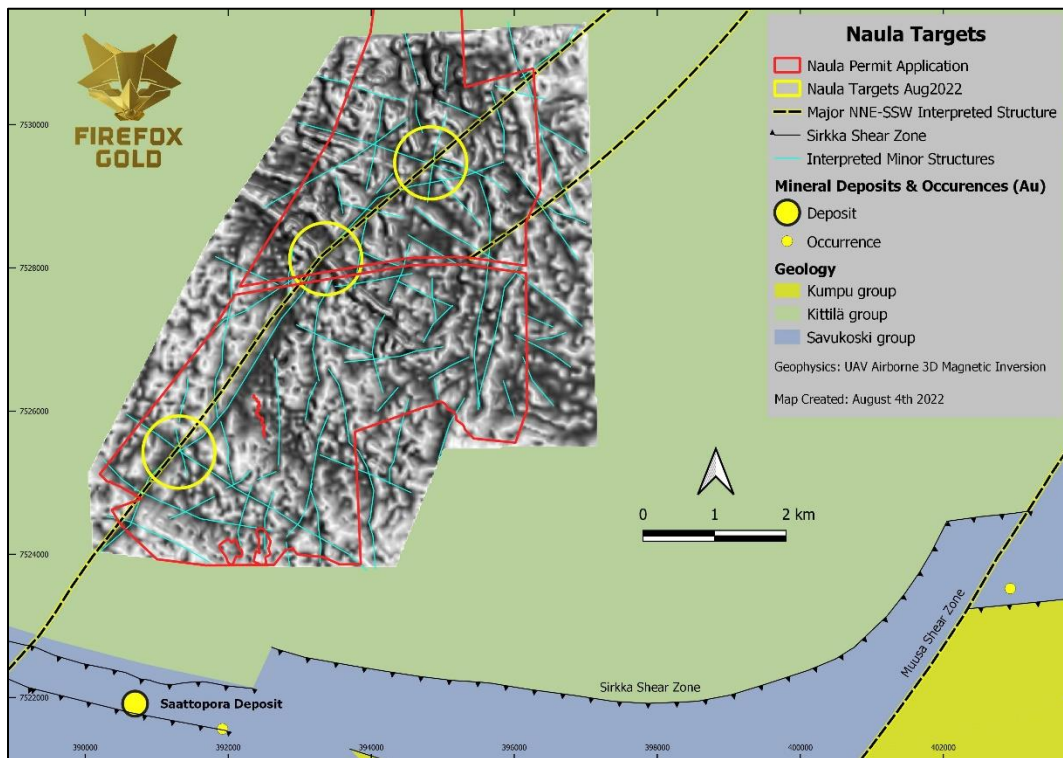


Figure 22. Naula Project and targets

On August 9, 2022, Firefox reported that it had completed, through its contractor Radai, a detailed UAV-based airborne magnetic survey over the Naula area. The FireFox technical team again collaborated with GoldSpot in the interpretation and evaluation of the new survey. Interpretation of the survey data has considerably upgraded FireFox's understanding of the geology at Naula, which had been based on widely spaced government magnetics surveys and limited work by others in the area. The data appear to indicate the presence of at least two significant NNE-SSW striking structures that had not been previously mapped (Figure 22). In addition to the NNE-SSW major structures, the survey suggested the presence of numerous NW-SE structures cutting the property. These are roughly parallel to the throughgoing SSZ and may be related to splays of that giant fault system, which is believed to be earlier than the NNE-SSW shear zones (often called a D3 or third deformation event). If confirmed, such structures can be highly prospective for gold in Lapland. Flexures in the major structures and their intersections with other faults are high priority targets for follow-up exploration.

FIREFOX GOLD CORP.*Management Discussion and Analysis*

September 30, 2023

SUMMARY OF QUARTERLY RESULTS

Quarter ended	30-Sept-23	30-Jun-23	31-Mar-23	31-Dec-22
Revenue ⁽¹⁾				
Loss for the quarter	\$ (904,458)	(1,006,484)	(839,621)	(642,297)
Loss per share	\$ (0.01)	(0.01)	(0.01)	(0.00)
Quarter ended	30-Sept-22	30-Jun-22	31-Mar-22	31-Dec-21
Revenue ⁽¹⁾				
Loss for the quarter	\$ (415,492)	(1,101,607)	(1,422,284)	(2,300,367)
Loss per share	\$ (0.00)	(0.01)	(0.01)	(0.02)

⁽¹⁾ this being a corporation without a revenue-generating business, there are no revenues from operations or investments.

Loss for the nine months ended September 30, 2023

Losses of \$2,750,563 in the nine months ended September 30, 2023 are less than the losses of \$2,939,384 in the nine months ended September 30, 2022 (“H122”), primarily due to exploration expenditures being higher in 2022 (\$2,433,003) than in 2023 (\$1,945,742). Share based compensation expense of \$246,028 in 2023 was higher when compared to NIL in 2022 due to the granting of 4.7M stock options in 2023 versus no share option grants in 2022.

Cash flows for the nine months ended September 30, 2023

For the nine months period ended September 30, 2023, the Company had a negative cash flow. This resulted in a cash decrease of \$ 476,285 (September 2022 – cash decrease of \$ 1,557,947). During the first nine months of 2023, the Company used the cash primarily for operating activities spending \$ 1,732,024 (September 2022 - \$ 3,209,349). As explained above, the Company had a larger budget available in 2022 for exploration, which allowed for increased mineral property exploration and associated increased costs. Cash provided from financing activities during the first nine months of 2023 was \$ 1,255,739 (September 2022 - \$1,721,068). Cash of \$NIL (September 2022 - \$69,667) was used in investing activities.

LIQUIDITY AND CAPITAL RESOURCES

The Company had a working capital deficit of \$516,130 as of September 30, 2023 (December 31, 2022 – surplus of \$619,776). The Company does not have revenues from operations and relies on outside funding for its continuing financial liquidity. The Company reported strong exploration results throughout 2022 and through the first three quarters of 2023, but the gold investment climate has proven very challenging. During the first nine months of 2023, \$1,255,739 was added to the treasury through private placements, but the terms for investment have weakened. The Company is actively seeking new financing at the time of this writing, but there can be no assurance that market conditions will facilitate additional financings, or that warrant holders will choose to exercise their warrants.

Management cautions that the Company will be required to commence raising additional funding beyond the funds raised in 2022 and 2023 in order to achieve the Company’s key objectives. An inability to raise additional funds would adversely impact the future assessment of the Company as a going concern.

CHANGES IN ACCOUNTING POLICIES

Accounting policies used in period, and changes anticipated in future periods, are as set out in the Company’s audited annual financial statements for the year ended December 31, 2022 (Note 4). The Company did not early adopt any recent pronouncements for the nine months period ended September 30, 2023.

FIREFOX GOLD CORP.

Management Discussion and Analysis

September 30, 2023

FINANCIAL INSTRUMENTS

The Company's financial instruments consist of cash, amounts receivable, accounts payable and accrued liabilities and amounts due to related parties. It is management's opinion that the Company is not exposed to significant interest risk arising from the financial instruments. The Company is exposed to credit risk in relation to the receivables balances, however, most receivables are in relation to sales tax due from the Canadian government. Credit risk is managed for receivables by seeking prompt payment, monitoring the age of receivables, and making follow up inquiries when receivables are not paid in a timely manner.

The Company does not engage in any hedging activities. Financial instruments do not generally expose the Company to risk that is significant enough to warrant reduction via purchasing specific insurance or offsetting financial instruments.

RELATED PARTY TRANSACTIONS

Key management compensation

Key management personnel at the Company are the directors and officers of the Company. The remuneration of key management personnel during the periods is as follows:

	Period ended September 30, 2023	Period ended September 30, 2022
Director remuneration ¹	\$ 72,000	\$ 48,000
Officer remuneration ¹	\$ 168,710	\$ 163,688
Share-based payments	\$ 153,040	\$ -

¹Remuneration consists exclusively of salaries, bonuses, health benefits if applicable and consulting fees for key management personnel.

Other than the amounts disclosed above, there were no short-term employee benefits or share-based payments granted to key management personnel during the period ended September 30, 2023 and September 30, 2022.

During the period ended September 30, 2023, mineral property exploration services valued at \$119,452 (September 30, 2022 - \$659,293) were provided by a company with an officer or director in common with FireFox. At September 30, 2023, \$9,617 (September 30, 2022 - \$142,572) was owed to a related corporation for mineral exploration services. At September 30, 2023, \$96,000 (September 30, 2022 - \$28,000) was owed to a related party for consulting fees, shown as personnel costs and exploration expenses on the statement of loss and comprehensive loss. At September 30, 2023, \$13,971 (September 30, 2022 - \$22,414) was owed to related parties in relation to accounting services and reimbursements of expenditures incurred on FireFox's behalf.

FireFox entered into mineral property option agreements with Magnus, further described in Notes 6(a) and (c) of the September 30, 2023 financial statements.

RISK FACTORS AND MANAGEMENT'S RESPONSIBILITY OVER FINANCIAL REPORTING

Risk Factors - General

Early-stage entities face a variety of risks and, while unable to eliminate all of them, the Company aims to manage and reduce such risks as much as possible.

FIREFOX GOLD CORP.

Management Discussion and Analysis

September 30, 2023

Cyber risk –During the year ended December 31, 2021, the Company was subject to an email fraud event. The business email was compromised by a sophisticated scam involving a hack of the Company’s email. This resulted in a \$232,404 non-recoverable cash loss for the Company. The amount is recorded in the exploration expenses and consulting expenses in the Consolidated Statement of Loss and Comprehensive Loss. The Company reported the fraud to the authorities and its financial institution and to date has recovered Euro 25,970.

Exploring for minerals is a highly technical and complicated process. FireFox is a relatively new company, and it has built a small technical team in Europe. However, the Company has entrusted elements of its field activities, contract management, logistics, and facility needs to the experienced and dedicated team at Magnus Minerals. Magnus is also a large shareholder in FireFox Gold, but should Magnus be unable to continue to act in this capacity for FireFox, the Company could suffer inefficiencies and short-term risks to its ability to conduct some aspects of its exploration program.

The risks that management considers most important in the context of the Company’s business are listed in this section. They are not listed in order of importance, nor are they inclusive of all the risks to which the Company may be subject. Sources of risk to the Company and its businesses include: reliance on key personnel; substantial capital requirements, exploration and development uncertainties, property commitments, operational risks associated with mineral exploration and development, environmental risks, commodity price fluctuations, economic and financial market instability, governmental regulation and policy, changes to government laws and regulations, risk related to the cyclical nature of the mining business, risk of title defects in mineral properties, lack of revenue and negative cash flow, legal and litigation risk, insurance risk, currency risk, conflicts of interest, time and cost estimates, consumables availability and costs, mineral resource uncertainties, and taxation.

The following risk factors should be given special consideration when evaluating an investment in any of the Company's securities:

- a) the Company has had no profitable business activity since its incorporation;
- b) the Company does not have a history of earnings, nor has it paid any dividends and will not generate earnings or pay dividends in the foreseeable future;
- c) the Company has only limited funds with which to continue its exploration and development opportunities and there can be no assurance that the Company will be successful in discovering economically recoverable minerals;
- d) the exploration and development opportunities being pursued may be financed in all or part by the issuance of additional securities by the Company and this may result in further dilution to the investor, which dilution may be significant, and which may also result in a change of control of the Company;
- e) there can be no assurance that an active and liquid market for the common shares will develop, and an investor may find it difficult to resell its common shares; and
- f) if the Company fails to progress its exploration and development opportunities, an interim cease trade order may be issued against the Company’s securities by an applicable securities commission.

OFF BALANCE SHEET ARRANGEMENTS

The Company has not entered into any off-balance sheet arrangements.

OUTSTANDING COMMON SHARES DATA

The following section updates the outstanding share data provided in the financial statements for the period ended September 30, 2023 up to the MD&A date of November 29, 2023.

FIREFOX GOLD CORP.

Management Discussion and Analysis

September 30, 2023

Common Shares:

Common shares outstanding at September 30, 2023 and November 29, 2023	152,381,058
---	-------------

Warrants:

Warrants outstanding at September 30, 2023 and November 29, 2023	42,983,044
--	------------

Stock Options:

Stock options outstanding at September 30, 2023 and November 29, 2023	11,330,000
---	------------